



# Emergency Housing Voucher (EHV)

## Available Units List

Email: [EHV.IP@hacla.org](mailto:EHV.IP@hacla.org)

Address	Unit #	City, State	Zip Code	BR Size	Rental Amount	Contact Person	Phone Number	Email
668 Lavetta Ter		Los Angeles, CA	90026	3	2866.00	Astrid Barrios	213-482-0653	<a href="mailto:astrid.barrios@eahhousing.org">astrid.barrios@eahhousing.org</a>
668 Lavetta Ter		Los Angeles, CA	90026	2	2008.00	Astrid Barrios	213-482-0653	<a href="mailto:astrid.barrios@eahhousing.org">astrid.barrios@eahhousing.org</a>
668 Lavetta Ter		Los Angeles, CA	90026	1	1460.00	Astrid Barrios	213-482-0653	<a href="mailto:astrid.barrios@eahhousing.org">astrid.barrios@eahhousing.org</a>
668 Lavetta Ter		Los Angeles, CA	90026	0	1311.00	Astrid Barrios	213-482-0653	<a href="mailto:astrid.barrios@eahhousing.org">astrid.barrios@eahhousing.org</a>
640 S Main St	502	Los Angeles, CA	90017	0	1369.00	Char Johnson	Contact by email	<a href="mailto:char.johnson@skidrow.org">char.johnson@skidrow.org</a>
640 S Main St	503	Los Angeles, CA	90017	0	1369.00	Char Johnson	Contact by email	<a href="mailto:char.johnson@skidrow.org">char.johnson@skidrow.org</a>
640 S Main St	506	Los Angeles, CA	90017	0	1369.00	Char Johnson	Contact by email	<a href="mailto:char.johnson@skidrow.org">char.johnson@skidrow.org</a>
640 S Main St	507	Los Angeles, CA	90017	0	1369.00	Char Johnson	Contact by email	<a href="mailto:char.johnson@skidrow.org">char.johnson@skidrow.org</a>
640 S Main St	515	Los Angeles, CA	90017	0	1369.00	Char Johnson	Contact by email	<a href="mailto:char.johnson@skidrow.org">char.johnson@skidrow.org</a>
640 S Main St	602	Los Angeles, CA	90017	0	1369.00	Char Johnson	Contact by email	<a href="mailto:char.johnson@skidrow.org">char.johnson@skidrow.org</a>
640 S Main St	603	Los Angeles, CA	90017	0	1369.00	Char Johnson	Contact by email	<a href="mailto:char.johnson@skidrow.org">char.johnson@skidrow.org</a>
640 S Main St	606	Los Angeles, CA	90017	0	1369.00	Char Johnson	Contact by email	<a href="mailto:char.johnson@skidrow.org">char.johnson@skidrow.org</a>
640 S Main St	607	Los Angeles, CA	90017	0	1369.00	Char Johnson	Contact by email	<a href="mailto:char.johnson@skidrow.org">char.johnson@skidrow.org</a>
640 S Main St	615	Los Angeles, CA	90017	0	1369.00	Char Johnson	Contact by email	<a href="mailto:char.johnson@skidrow.org">char.johnson@skidrow.org</a>
640 S Main St	702	Los Angeles, CA	90017	0	1369.00	Char Johnson	Contact by email	<a href="mailto:char.johnson@skidrow.org">char.johnson@skidrow.org</a>
640 S Main St	703	Los Angeles, CA	90017	0	1369.00	Char Johnson	Contact by email	<a href="mailto:char.johnson@skidrow.org">char.johnson@skidrow.org</a>
640 S Main St	706	Los Angeles, CA	90017	0	1369.00	Char Johnson	Contact by email	<a href="mailto:char.johnson@skidrow.org">char.johnson@skidrow.org</a>
640 S Main St	707	Los Angeles, CA	90017	0	1369.00	Char Johnson	Contact by email	<a href="mailto:char.johnson@skidrow.org">char.johnson@skidrow.org</a>
640 S Main St	716	Los Angeles, CA	90017	0	1369.00	Char Johnson	Contact by email	<a href="mailto:char.johnson@skidrow.org">char.johnson@skidrow.org</a>
640 S Main St	802	Los Angeles, CA	90017	0	1369.00	Char Johnson	Contact by email	<a href="mailto:char.johnson@skidrow.org">char.johnson@skidrow.org</a>



# Emergency Housing Voucher (EHV)

## Available Units List

Email: [EHV.IP@hacla.org](mailto:EHV.IP@hacla.org)

Address	Unit #	City, State	Zip Code	BR Size	Rental Amount	Contact Person	Phone Number	Email
640 S Main St	803	Los Angeles, CA	90017	0	1369.00	Char Johnson	Contact by email	<a href="mailto:char.johnson@skidrow.org">char.johnson@skidrow.org</a>
640 S Main St	806	Los Angeles, CA	90017	0	1369.00	Char Johnson	Contact by email	<a href="mailto:char.johnson@skidrow.org">char.johnson@skidrow.org</a>
640 S Main St	807	Los Angeles, CA	90017	0	1369.00	Char Johnson	Contact by email	<a href="mailto:char.johnson@skidrow.org">char.johnson@skidrow.org</a>
640 S Main St	816	Los Angeles, CA	90017	0	1369.00	Char Johnson	Contact by email	<a href="mailto:char.johnson@skidrow.org">char.johnson@skidrow.org</a>
640 S Main St	902	Los Angeles, CA	90017	0	1369.00	Char Johnson	Contact by email	<a href="mailto:char.johnson@skidrow.org">char.johnson@skidrow.org</a>
640 S Main St	903	Los Angeles, CA	90017	0	1369.00	Char Johnson	Contact by email	<a href="mailto:char.johnson@skidrow.org">char.johnson@skidrow.org</a>
640 S Main St	906	Los Angeles, CA	90017	0	1369.00	Char Johnson	Contact by email	<a href="mailto:char.johnson@skidrow.org">char.johnson@skidrow.org</a>
640 S Main St	907	Los Angeles, CA	90017	0	1369.00	Char Johnson	Contact by email	<a href="mailto:char.johnson@skidrow.org">char.johnson@skidrow.org</a>
640 S Main St	916	Los Angeles, CA	90017	0	1369.00	Char Johnson	Contact by email	<a href="mailto:char.johnson@skidrow.org">char.johnson@skidrow.org</a>
640 S Main St	501	Los Angeles, CA	90017	SRO	1026.00	Char Johnson	Contact by email	<a href="mailto:char.johnson@skidrow.org">char.johnson@skidrow.org</a>
640 S Main St	504	Los Angeles, CA	90017	SRO	1026.00	Char Johnson	Contact by email	<a href="mailto:char.johnson@skidrow.org">char.johnson@skidrow.org</a>
640 S Main St	505	Los Angeles, CA	90017	SRO	1026.00	Char Johnson	Contact by email	<a href="mailto:char.johnson@skidrow.org">char.johnson@skidrow.org</a>
640 S Main St	508	Los Angeles, CA	90017	SRO	1026.00	Char Johnson	Contact by email	<a href="mailto:char.johnson@skidrow.org">char.johnson@skidrow.org</a>
640 S Main St	509	Los Angeles, CA	90017	SRO	1026.00	Char Johnson	Contact by email	<a href="mailto:char.johnson@skidrow.org">char.johnson@skidrow.org</a>
640 S Main St	510	Los Angeles, CA	90017	SRO	1026.00	Char Johnson	Contact by email	<a href="mailto:char.johnson@skidrow.org">char.johnson@skidrow.org</a>
640 S Main St	511	Los Angeles, CA	90017	SRO	1026.00	Char Johnson	Contact by email	<a href="mailto:char.johnson@skidrow.org">char.johnson@skidrow.org</a>
640 S Main St	512	Los Angeles, CA	90017	SRO	1026.00	Char Johnson	Contact by email	<a href="mailto:char.johnson@skidrow.org">char.johnson@skidrow.org</a>
640 S Main St	513	Los Angeles, CA	90017	SRO	1026.00	Char Johnson	Contact by email	<a href="mailto:char.johnson@skidrow.org">char.johnson@skidrow.org</a>
640 S Main St	514	Los Angeles, CA	90017	SRO	1026.00	Char Johnson	Contact by email	<a href="mailto:char.johnson@skidrow.org">char.johnson@skidrow.org</a>
640 S Main St	516	Los Angeles, CA	90017	SRO	1026.00	Char Johnson	Contact by email	<a href="mailto:char.johnson@skidrow.org">char.johnson@skidrow.org</a>



# Emergency Housing Voucher (EHV)

## Available Units List

Email: [EHV.IP@hacla.org](mailto:EHV.IP@hacla.org)

Address	Unit #	City, State	Zip Code	BR Size	Rental Amount	Contact Person	Phone Number	Email
640 S Main St	517	Los Angeles, CA	90017	SRO	1026.00	Char Johnson	Contact by email	<a href="mailto:char.johnson@skidrow.org">char.johnson@skidrow.org</a>
640 S Main St	601	Los Angeles, CA	90017	SRO	1026.00	Char Johnson	Contact by email	<a href="mailto:char.johnson@skidrow.org">char.johnson@skidrow.org</a>
640 S Main St	604	Los Angeles, CA	90017	SRO	1026.00	Char Johnson	Contact by email	<a href="mailto:char.johnson@skidrow.org">char.johnson@skidrow.org</a>
640 S Main St	605	Los Angeles, CA	90017	SRO	1026.00	Char Johnson	Contact by email	<a href="mailto:char.johnson@skidrow.org">char.johnson@skidrow.org</a>
640 S Main St	608	Los Angeles, CA	90017	SRO	1026.00	Char Johnson	Contact by email	<a href="mailto:char.johnson@skidrow.org">char.johnson@skidrow.org</a>
640 S Main St	609	Los Angeles, CA	90017	SRO	1026.00	Char Johnson	Contact by email	<a href="mailto:char.johnson@skidrow.org">char.johnson@skidrow.org</a>
640 S Main St	610	Los Angeles, CA	90017	SRO	1026.00	Char Johnson	Contact by email	<a href="mailto:char.johnson@skidrow.org">char.johnson@skidrow.org</a>
640 S Main St	611	Los Angeles, CA	90017	SRO	1026.00	Char Johnson	Contact by email	<a href="mailto:char.johnson@skidrow.org">char.johnson@skidrow.org</a>
640 S Main St	612	Los Angeles, CA	90017	SRO	1026.00	Char Johnson	Contact by email	<a href="mailto:char.johnson@skidrow.org">char.johnson@skidrow.org</a>
640 S Main St	613	Los Angeles, CA	90017	SRO	1026.00	Char Johnson	Contact by email	<a href="mailto:char.johnson@skidrow.org">char.johnson@skidrow.org</a>
640 S Main St	614	Los Angeles, CA	90017	SRO	1026.00	Char Johnson	Contact by email	<a href="mailto:char.johnson@skidrow.org">char.johnson@skidrow.org</a>
640 S Main St	616	Los Angeles, CA	90017	SRO	1026.00	Char Johnson	Contact by email	<a href="mailto:char.johnson@skidrow.org">char.johnson@skidrow.org</a>
640 S Main St	617	Los Angeles, CA	90017	SRO	1026.00	Char Johnson	Contact by email	<a href="mailto:char.johnson@skidrow.org">char.johnson@skidrow.org</a>
640 S Main St	701	Los Angeles, CA	90017	SRO	1026.00	Char Johnson	Contact by email	<a href="mailto:char.johnson@skidrow.org">char.johnson@skidrow.org</a>
640 S Main St	704	Los Angeles, CA	90017	SRO	1026.00	Char Johnson	Contact by email	<a href="mailto:char.johnson@skidrow.org">char.johnson@skidrow.org</a>
640 S Main St	705	Los Angeles, CA	90017	SRO	1026.00	Char Johnson	Contact by email	<a href="mailto:char.johnson@skidrow.org">char.johnson@skidrow.org</a>
640 S Main St	708	Los Angeles, CA	90017	SRO	1026.00	Char Johnson	Contact by email	<a href="mailto:char.johnson@skidrow.org">char.johnson@skidrow.org</a>
640 S Main St	709	Los Angeles, CA	90017	SRO	1026.00	Char Johnson	Contact by email	<a href="mailto:char.johnson@skidrow.org">char.johnson@skidrow.org</a>
640 S Main St	710	Los Angeles, CA	90017	SRO	1026.00	Char Johnson	Contact by email	<a href="mailto:char.johnson@skidrow.org">char.johnson@skidrow.org</a>
640 S Main St	711	Los Angeles, CA	90017	SRO	1026.00	Char Johnson	Contact by email	<a href="mailto:char.johnson@skidrow.org">char.johnson@skidrow.org</a>



# Emergency Housing Voucher (EHV)

## Available Units List

Email: [EHV.IP@hacla.org](mailto:EHV.IP@hacla.org)

Address	Unit #	City, State	Zip Code	BR Size	Rental Amount	Contact Person	Phone Number	Email
640 S Main St	712	Los Angeles, CA	90017	SRO	1026.00	Char Johnson	Contact by email	<a href="mailto:char.johnson@skidrow.org">char.johnson@skidrow.org</a>
640 S Main St	713	Los Angeles, CA	90017	SRO	1026.00	Char Johnson	Contact by email	<a href="mailto:char.johnson@skidrow.org">char.johnson@skidrow.org</a>
640 S Main St	714	Los Angeles, CA	90017	SRO	1026.00	Char Johnson	Contact by email	<a href="mailto:char.johnson@skidrow.org">char.johnson@skidrow.org</a>
640 S Main St	715	Los Angeles, CA	90017	SRO	1026.00	Char Johnson	Contact by email	<a href="mailto:char.johnson@skidrow.org">char.johnson@skidrow.org</a>
640 S Main St	717	Los Angeles, CA	90017	SRO	1026.00	Char Johnson	Contact by email	<a href="mailto:char.johnson@skidrow.org">char.johnson@skidrow.org</a>
640 S Main St	801	Los Angeles, CA	90017	SRO	1026.00	Char Johnson	Contact by email	<a href="mailto:char.johnson@skidrow.org">char.johnson@skidrow.org</a>
640 S Main St	804	Los Angeles, CA	90017	SRO	1026.00	Char Johnson	Contact by email	<a href="mailto:char.johnson@skidrow.org">char.johnson@skidrow.org</a>
640 S Main St	805	Los Angeles, CA	90017	SRO	1026.00	Char Johnson	Contact by email	<a href="mailto:char.johnson@skidrow.org">char.johnson@skidrow.org</a>
640 S Main St	808	Los Angeles, CA	90017	SRO	1026.00	Char Johnson	Contact by email	<a href="mailto:char.johnson@skidrow.org">char.johnson@skidrow.org</a>
640 S Main St	809	Los Angeles, CA	90017	SRO	1026.00	Char Johnson	Contact by email	<a href="mailto:char.johnson@skidrow.org">char.johnson@skidrow.org</a>
640 S Main St	810	Los Angeles, CA	90017	SRO	1026.00	Char Johnson	Contact by email	<a href="mailto:char.johnson@skidrow.org">char.johnson@skidrow.org</a>
640 S Main St	811	Los Angeles, CA	90017	SRO	1026.00	Char Johnson	Contact by email	<a href="mailto:char.johnson@skidrow.org">char.johnson@skidrow.org</a>
640 S Main St	812	Los Angeles, CA	90017	SRO	1026.00	Char Johnson	Contact by email	<a href="mailto:char.johnson@skidrow.org">char.johnson@skidrow.org</a>
640 S Main St	813	Los Angeles, CA	90017	SRO	1026.00	Char Johnson	Contact by email	<a href="mailto:char.johnson@skidrow.org">char.johnson@skidrow.org</a>
640 S Main St	814	Los Angeles, CA	90017	SRO	1026.00	Char Johnson	Contact by email	<a href="mailto:char.johnson@skidrow.org">char.johnson@skidrow.org</a>
640 S Main St	815	Los Angeles, CA	90017	SRO	1026.00	Char Johnson	Contact by email	<a href="mailto:char.johnson@skidrow.org">char.johnson@skidrow.org</a>
640 S Main St	817	Los Angeles, CA	90017	SRO	1026.00	Char Johnson	Contact by email	<a href="mailto:char.johnson@skidrow.org">char.johnson@skidrow.org</a>
640 S Main St	901	Los Angeles, CA	90017	SRO	1026.00	Char Johnson	Contact by email	<a href="mailto:char.johnson@skidrow.org">char.johnson@skidrow.org</a>
640 S Main St	904	Los Angeles, CA	90017	SRO	1026.00	Char Johnson	Contact by email	<a href="mailto:char.johnson@skidrow.org">char.johnson@skidrow.org</a>
640 S Main St	905	Los Angeles, CA	90017	SRO	1026.00	Char Johnson	Contact by email	<a href="mailto:char.johnson@skidrow.org">char.johnson@skidrow.org</a>



# Emergency Housing Voucher (EHV)

## Available Units List

Email: [EHV.IP@hacla.org](mailto:EHV.IP@hacla.org)

Address	Unit #	City, State	Zip Code	BR Size	Rental Amount	Contact Person	Phone Number	Email
640 S Main St	908	Los Angeles, CA	90017	SRO	1026.00	Char Johnson	Contact by email	<a href="mailto:char.johnson@skidrow.org">char.johnson@skidrow.org</a>
640 S Main St	909	Los Angeles, CA	90017	SRO	1026.00	Char Johnson	Contact by email	<a href="mailto:char.johnson@skidrow.org">char.johnson@skidrow.org</a>
640 S Main St	910	Los Angeles, CA	90017	SRO	1026.00	Char Johnson	Contact by email	<a href="mailto:char.johnson@skidrow.org">char.johnson@skidrow.org</a>
640 S Main St	911	Los Angeles, CA	90017	SRO	1026.00	Char Johnson	Contact by email	<a href="mailto:char.johnson@skidrow.org">char.johnson@skidrow.org</a>
640 S Main St	912	Los Angeles, CA	90017	SRO	1026.00	Char Johnson	Contact by email	<a href="mailto:char.johnson@skidrow.org">char.johnson@skidrow.org</a>
640 S Main St	913	Los Angeles, CA	90017	SRO	1026.00	Char Johnson	Contact by email	<a href="mailto:char.johnson@skidrow.org">char.johnson@skidrow.org</a>
640 S Main St	914	Los Angeles, CA	90017	SRO	1026.00	Char Johnson	Contact by email	<a href="mailto:char.johnson@skidrow.org">char.johnson@skidrow.org</a>
640 S Main St	915	Los Angeles, CA	90017	SRO	1026.00	Char Johnson	Contact by email	<a href="mailto:char.johnson@skidrow.org">char.johnson@skidrow.org</a>
640 S Main St	917	Los Angeles, CA	90017	SRO	1026.00	Char Johnson	Contact by email	<a href="mailto:char.johnson@skidrow.org">char.johnson@skidrow.org</a>
1812 W 5th st	207	Los Angeles, CA	90057	0	1395.00	Caty	323-441-6583	<a href="mailto:Caty@grayroseconsulting.com">Caty@grayroseconsulting.com</a>
2301 W Jefferson Blvd	3	Los Angeles, CA	90018	1	1600.00	Niesha/ Ricky	310-404-3274	<a href="mailto:ndt20@hotmail.com">ndt20@hotmail.com</a>
1719 1/2 W Gage Ave		Los Angeles, CA	90047	2	2400.00	Manuel	323-819-0029	<a href="mailto:manuel44lara@yahoo.com">manuel44lara@yahoo.com</a>
4515 August St	12	Los Angeles, CA	90008	2	2452.00	Caty	323-441-6583	<a href="mailto:Caty@grayroseconsulting.com">Caty@grayroseconsulting.com</a>
1214 E Sadison St	1	Wilmington, CA	90744	2	2452.00	Daisy Sanchez	626-655-0910	<a href="mailto:leasing@GetHomes.org">leasing@GetHomes.org</a>
248 N Chicago St	25	Los Angeles, CA	90033	1	1895.00	Caty	323-441-6583	<a href="mailto:Caty@grayroseconsulting.com">Caty@grayroseconsulting.com</a>
135 W Avenue 26	8	Los Angeles, CA	90031	2	2140.00	Cassandra Winsto	424-318-2096	<a href="mailto:programs@section8management.com">programs@section8management.com</a>
135 W Avenue 26	10	Los Angeles, CA	90031	2	2140.00	Cassandra Winsto	424-318-2096	<a href="mailto:programs@section8management.com">programs@section8management.com</a>
101 Bridgewell St	211	Los Angeles, CA	90042	2	2400.00	Zachary	213-335-3871	<a href="mailto:zacharyg@pasadenaparkplace.com">zacharyg@pasadenaparkplace.com</a>
349 W 80th St	2	Los Angeles, CA	90003	2	2452.00	Daisy Sanchez	323-441-6583	<a href="mailto:Daisy@grayroseconsulting.com">Daisy@grayroseconsulting.com</a>
242 W 77th St	2	Los Angeles, CA	90003	STUD	1660.00	Daisy Sanchez	626-655-0910	<a href="mailto:Leasing@GetHomes.org">Leasing@GetHomes.org</a>



# Emergency Housing Voucher (EHV)

## Available Units List

Email: [EHV.IP@hacla.org](mailto:EHV.IP@hacla.org)

Address	Unit #	City, State	Zip Code	BR Size	Rental Amount	Contact Person	Phone Number	Email
6109 Crenshaw Blvd	216	Los Angeles, CA	90043	1	1924.00	Daisy Sanchez	626-655-0910	<a href="mailto:Leasing@GetHomes.org">Leasing@GetHomes.org</a>
6109 Crenshaw Blvd	405	Los Angeles, CA	90043	1	1924.00	Daisy Sanchez	626-655-0910	<a href="mailto:Leasing@GetHomes.org">Leasing@GetHomes.org</a>
1351 Vernon Ave	4	Los Angeles, CA	90011	2	2452.00	Daisy Sanchez	626-655-0910	<a href="mailto:Leasing@GetHomes.org">Leasing@GetHomes.org</a>
1427 254th St		Los Angeles, CA	90710	3	3192.00	Ben Shih	888-608-0848	<a href="mailto:ben@peakmanagement.co">ben@peakmanagement.co</a>
350 W 80th St	4	Los Angeles, CA	90003	2	2452.00	Daisy Sanchez	323-441-6583	<a href="mailto:Daisy@grayroseconsulting.com">Daisy@grayroseconsulting.com</a>
914 E Cruces St	4	Wilmington, CA	90744	1	1924.00	Daisy Sanchez	626-655-0910	<a href="mailto:Leasing@GetHomes.org">Leasing@GetHomes.org</a>
10829 Fulton Wells Ave		Santa Fe Springs	90670	1	1665.00	Costa Azul Senior	562-944-4999	<a href="mailto:Daisy@grayroseconsulting.com">Daisy@grayroseconsulting.com</a>
13712 Sunkist Dr	308	La Puente,CA	91746	1	1466.00	Vanessa Herrera	626-960-1219	<a href="mailto:Daisy@grayroseconsulting.com">Daisy@grayroseconsulting.com</a>
1379 W Mission Blvd		Pomona,CA	91766	STUD	1242.00	Sandra	951-464-2577	<a href="mailto:Daisy@grayroseconsulting.com">Daisy@grayroseconsulting.com</a>
14428 Ramona Blvd		Baldwin Park,CA	91706	1	1269.00	Natalia	626-814-3200	<a href="mailto:Daisy@grayroseconsulting.com">Daisy@grayroseconsulting.com</a>
1525 S Hayworth Ave		Los Angeles,CA	90035	2	2263.00	Afjinvestment Cor	323-715-0062	<a href="mailto:Daisy@grayroseconsulting.com">Daisy@grayroseconsulting.com</a>
248 N Chicago St	2	Los Angeles, CA	90003	0	1660.00	Daisy Sanchez	323-441-6583	<a href="mailto:Daisy@grayroseconsulting.com">Daisy@grayroseconsulting.com</a>
4015 Santo Tomas Dr	C	Los Angeles, CA	90008	2	2452.00	Daisy Sanchez	626-655-0910	<a href="mailto:leasing@GetHomes.org">leasing@GetHomes.org</a>
1222 3/4 W 109th Pl		Los Angeles, CA	90043	Studic	1550.00	Daisy Sanchez	323-441-6583	<a href="mailto:Daisy@grayroseconsulting.com">Daisy@grayroseconsulting.com</a>
4110 2nd Ave	12	Los Angeles, CA	90008	3	2850.00	Tom Nguyen	818-577-3090	<a href="mailto:tatn2001@yahoo.com">tatn2001@yahoo.com</a>
4309 S Main St	202	Los Angeles, CA	90037	0	1550.00	Daisy Sanchez	323-441-6583	<a href="mailto:Leasing@GetHomes.org">Leasing@GetHomes.org</a>
132 W 74th St		Los Angeles, CA	90003	5	2995.00	Sarah Kovalsky	323-986-9308	<a href="mailto:sarah.hoffmanbrothers@gmail.com">sarah.hoffmanbrothers@gmail.com</a>
1421 1/2 W 36th St	A	Los Angeles, CA	90018	3	2925.00	Sarah Kovalsky	323-986-9308	<a href="mailto:sarah.hoffmanbrothers@gmail.com">sarah.hoffmanbrothers@gmail.com</a>
2641 S Manhattan Pl	201	Los Angeles, CA	90018	4	3516.00	James Lee	213-637-4710	<a href="mailto:jlee@uniqueconstruction.us">jlee@uniqueconstruction.us</a>
3829 Wall St	6	Los Angeles, CA	90011	2	2150.00	Sarah Kovalsky	323-986-9308	<a href="mailto:sarah.hoffmanbrothers@gmail.com">sarah.hoffmanbrothers@gmail.com</a>



# Emergency Housing Voucher (EHV)

## Available Units List

Email: [EHV.IP@hacla.org](mailto:EHV.IP@hacla.org)

Address	Unit #	City, State	Zip Code	BR Size	Rental Amount	Contact Person	Phone Number	Email
4527 S Wilton Pl		Los Angeles, CA	90062	4	3000.00	Ren Wiggins	310-490-8148	<a href="mailto:reneewig1@yahoo.com">reneewig1@yahoo.com</a>
1038 W 57th St	1042	Los Angeles, CA	90037	1	1765.00	Sarah Kovalsky	323-986-9308	<a href="mailto:sarah.hoffmanbrothers@gmail.com">sarah.hoffmanbrothers@gmail.com</a>
10626 S Budlong Ave	7	Los Angeles, CA	90044	2	2195.00	Sarah Kovalsky	323-986-9308	<a href="mailto:sarah.hoffmanbrothers@gmail.com">sarah.hoffmanbrothers@gmail.com</a>
10961 S Figueroa St	13	Los Angeles, CA	90061	2	1750.00	Sarah Kovalsky	323-986-9308	<a href="mailto:sarah.hoffmanbrothers@gmail.com">sarah.hoffmanbrothers@gmail.com</a>
10961 S Figueroa St	1	Los Angeles, CA	90061	STUD	1295.00	Sarah Kovalsky	323-986-9308	<a href="mailto:sarah.hoffmanbrothers@gmail.com">sarah.hoffmanbrothers@gmail.com</a>
1181 W 38th St	5	Los Angeles, CA	90037	2	2095.00	Sarah Kovalsky	323-986-9308	<a href="mailto:sarah.hoffmanbrothers@gmail.com">sarah.hoffmanbrothers@gmail.com</a>
2505 W 6th St	207	Los Angeles, CA	90057	0	1395.00	Sarah Kovalsky	323-986-9308	<a href="mailto:sarah.hoffmanbrothers@gmail.com">sarah.hoffmanbrothers@gmail.com</a>
4188 ½ Leimert Blvd		Los Angeles, CA	90008	2	2050.00	Gale Beal	323-299-6075	<a href="mailto:gdamry@gmail.com">gdamry@gmail.com</a>
4410 1/2 7th Ave		Los Angeles, CA	90043	0	1295.00	Sarah Kovalsky	323-986-9308	<a href="mailto:sarah.hoffmanbrothers@gmail.com">sarah.hoffmanbrothers@gmail.com</a>
601 W 73rd St	6	Los Angeles, CA	90044	2	2100.00	Sarah Kovalsky	323-986-9308	<a href="mailto:sarah.hoffmanbrothers@gmail.com">sarah.hoffmanbrothers@gmail.com</a>
6125 S Victoria Ave	7	Los Angeles, CA	90043	2	2045.00	Sarah Kovalsky	323-986-9308	<a href="mailto:sarah.hoffmanbrothers@gmail.com">sarah.hoffmanbrothers@gmail.com</a>
639 E Martin Luther Kir 9 North		Los Angeles, CA	90011	1	1600.00	Sarah Kovalsky	323-986-9308	<a href="mailto:sarah.hoffmanbrothers@gmail.com">sarah.hoffmanbrothers@gmail.com</a>
6763 Atoll Ave		Hollywood, CA	91606	1	1695.00	Sarah Kovalsky		
736 E 80th St		Los Angeles, CA	90001	2	2050.00	Sarah Kovalsky	323-986-9308	<a href="mailto:sarah.hoffmanbrothers@gmail.com">sarah.hoffmanbrothers@gmail.com</a>
8320 Avalon Blvd	A	Los Angeles, CA	90003	1	1700.00	Sarah Kovalsky	323-986-9308	<a href="mailto:sarah.hoffmanbrothers@gmail.com">sarah.hoffmanbrothers@gmail.com</a>
850 W 95th St	7	Los Angeles, CA	90044	2	2045.00	Sarah Kovalsky	323-986-9308	<a href="mailto:sarah.hoffmanbrothers@gmail.com">sarah.hoffmanbrothers@gmail.com</a>
927 E 108th St	5	Los Angeles, CA	90059	2	1945.00	Sarah Kovalsky	323-986-9308	<a href="mailto:sarah.hoffmanbrothers@gmail.com">sarah.hoffmanbrothers@gmail.com</a>
9450 S Western Ave	7A	Los Angeles, CA	90047	2	1995.00	Sarah Kovalsky	323-986-9308	<a href="mailto:sarah.hoffmanbrothers@gmail.com">sarah.hoffmanbrothers@gmail.com</a>
9452 S Western Ave	7	Los Angeles, CA	90047	2	1895.00	Sarah Kovalsky	323-986-9308	<a href="mailto:sarah.hoffmanbrothers@gmail.com">sarah.hoffmanbrothers@gmail.com</a>



# Emergency Housing Voucher (EHV)

## Available Units List

Email: [EHV.IP@hacla.org](mailto:EHV.IP@hacla.org)

Address	Unit #	City, State	Zip Code	BR Size	Rental Amount	Contact Person	Phone Number	Email
1812 W 5th st	410	Los Angeles, CA	90057	STUD	1550.00	Daisy Sanchez	323-441-6583	<a href="mailto:Daisy@grayroseconsulting.com">Daisy@grayroseconsulting.com</a>
4309 S Main St	207	Los Angeles, CA	90037	0	1550.00	Daisy Sanchez	323-441-6583	<a href="mailto:Daisy@grayroseconsulting.com">Daisy@grayroseconsulting.com</a>
871 N Oxford Ave		Los Angeles, CA	90029	STUD	1550.00	Daisy Sanchez	626-655-0910	<a href="mailto:Leasing@GetHomes.org">Leasing@GetHomes.org</a>
912 W 83rd St	A	Los Angeles, CA	90044	STUD	800.00	Daisy Sanchez	626-655-0910	<a href="mailto:Leasing@GetHomes.org">Leasing@GetHomes.org</a>
4127 Palmwood Dr	8	Los Angeles, CA	90008	STUD	1200.00	Raymond	213-468-0680	<a href="mailto:raymondg.blapts@gmail.com">raymondg.blapts@gmail.com</a>
3307 E 6th St	8	Los Angeles, CA	90023	2	2195.00	Daisy Sanchez	626-655-0910	<a href="mailto:leasing@GetHomes.org">leasing@GetHomes.org</a>
4148 Woodlawn Ave		Los Angeles, CA	90011	3	3231.00	Tanya Galarza	818-751-3410	<a href="mailto:tgalahomes@gmail.com">tgalahomes@gmail.com</a>
719 W 47th St	5	Los Angeles, CA	90037	1	1700.00	Daisy Sanchez	323-441-6583	<a href="mailto:Daisy@grayroseconsulting.com">Daisy@grayroseconsulting.com</a>
1425 S Bronson Ave	25	Los Angeles, CA	90019	Studic	1275.00	Tiffany/Darnell	323-715-0062	<a href="mailto:afjinvestments@att.net">afjinvestments@att.net</a>
1425 S Bronson Ave	23	Los Angeles, CA	90019	Studic	1275.00	Tiffany/Darnell	323-715-0062	<a href="mailto:afjinvestments@att.net">afjinvestments@att.net</a>
11750 Kittridge St		North Hollywood	91606	2	1950.00	Raul Osorio	818-6999126	<a href="mailto:raulosorio@mosscompany.com">raulosorio@mosscompany.com</a>
4025 Coco Ave	4	Los Angeles, CA	90008	2	2452.00	Julia Wong	714 928-7886	<a href="mailto:juliawong0707@gmail.com">juliawong0707@gmail.com</a>
4026 Coco Ave	18	Los Angeles, CA	90008	2	2452.00	Julia Wong	714 928-7886	<a href="mailto:juliawong0707@gmail.com">juliawong0707@gmail.com</a>
1138 E 20th St		Los Angeles, CA	90011	2	2295.00	Jim Yi	310-749-1775	<a href="mailto:jim@redhawkmanagement.com">jim@redhawkmanagement.com</a>
12230 N Santa Fe		Lynwood, CA	90222	2	2295.00	Jim Yi	310-749-1775	<a href="mailto:jim@redhawkmanagement.com">jim@redhawkmanagement.com</a>
2315 S Grand Ave	12	San Pedro, CA	90731	1	1595.00	Lori/Alex	310-833-6227	<a href="mailto:lori@propwestmgt.com">lori@propwestmgt.com</a>
368 W 11th St	2	San Pedro, CA	90731	3	2695.00	Lori/Alex	310-833-6227	<a href="mailto:lori@propwestmgt.com">lori@propwestmgt.com</a>
4173 Somerset Drive		Los Angeles, CA	90008	2	2295.00	Jim Yi	310-749-1775	<a href="mailto:jim@redhawkmanagement.com">jim@redhawkmanagement.com</a>
676 1/2 W 14th St		San Pedro, CA	90731	1	1525.00	Lori/Alex	310-833-6227	<a href="mailto:lori@propwestmgt.com">lori@propwestmgt.com</a>
234 E 55th St		Los Angeles, CA	90011	2	1599.00	Alexus Arnold	818-791-4326	<a href="mailto:alexus4re@gmail.com">alexus4re@gmail.com</a>





# Emergency Housing Voucher (EHV)

## Available Units List

Email: [EHV.IP@hacla.org](mailto:EHV.IP@hacla.org)

Address	Unit #	City, State	Zip Code	BR Size	Rental Amount	Contact Person	Phone Number	Email
5333 Hype St	90983k	Los Angeles, CA	90032	3	2100.00	Stephen	626-353-2384	<a href="mailto:stephen.eng@convoyre.com">stephen.eng@convoyre.com</a>
5333 Hype St	90982k	Los Angeles, CA	90032	2	1878.00	Stephen	626-353-2384	<a href="mailto:stephen.eng@convoyre.com">stephen.eng@convoyre.com</a>
5333 Hype St	90981k	Los Angeles, CA	90032	1	1512.00	Stephen	626-353-2384	<a href="mailto:stephen.eng@convoyre.com">stephen.eng@convoyre.com</a>
5845 W Virginia Ave	2	Los Angeles, CA	90038	1	1749.00	Daisy Sanchez	323-441-6583	<a href="mailto:Daisy@grayroseconsulting.com">Daisy@grayroseconsulting.com</a>
615 South Centre St	120	San Pedro, CA	90731	STUD	935.00	Jacob	310-732-1640	<a href="mailto:lori@propwestmgt.com">lori@propwestmgt.com</a>
10974 S Figueroa St	1	Los Angeles, CA	90061	2	1999.00	Alexus Arnold	818-791-4326	<a href="mailto:alexus4re@gmail.com">alexus4re@gmail.com</a>
1234 Riverside Dr		Valley Village, C	91607	2	2145.00	Sarah	323-677-2784	<a href="mailto:sarah.hoffmanbrothers@gmail.com">sarah.hoffmanbrothers@gmail.com</a>
1400 S Bronson Ave		Los Angeles, CA	90019	3	2725.00	Sarah Kovalsky	323-986-9308	<a href="mailto:sarah.hoffmanbrothers@gmail.com">sarah.hoffmanbrothers@gmail.com</a>
1402 S Bronson Ave		Los Angeles, CA	90019	3	2725.00	Sarah Kovalsky	323-986-9308	<a href="mailto:sarah.hoffmanbrothers@gmail.com">sarah.hoffmanbrothers@gmail.com</a>
1550 2nd Ave	8	Los Angeles, CA	90019	3	2895.00	Sarah Kovalsky	323-986-9308	<a href="mailto:sarah.hoffmanbrothers@gmail.com">sarah.hoffmanbrothers@gmail.com</a>
205 W 89th St	1	Los Angeles, CA	90003	3	2600.00	Alexus Arnold	818-791-4326	<a href="mailto:alexus4re@gmail.com">alexus4re@gmail.com</a>
636 N Hill Pl	B302	Los Angeles, CA	90012	2	2450.00	Patricia	626-825-2982	<a href="mailto:pjmiller@grovelandmgt.com">pjmiller@grovelandmgt.com</a>
636 N Hill Pl	A215	Los Angeles, CA	90012	2	2450.00	Patricia	626-825-2982	<a href="mailto:pjmiller@grovelandmgt.com">pjmiller@grovelandmgt.com</a>
9230 S Figueroa St		Los Angeles, CA	90003	2	1888.00	Alexus Arnold	818-791-4326	<a href="mailto:alexus4re@gmail.com">alexus4re@gmail.com</a>
104 S Cummings St	20	Los Angeles, CA	90033	1	1495.00	Mark Nowfar	818-943-4371	<a href="mailto:laderallc@yahoo.com">laderallc@yahoo.com</a>
108 S Cummings St		Los Angeles, CA	90033	2	2150.00	Shirley Nowfar	818-943-4371	<a href="mailto:laderallc@yahoo.com">laderallc@yahoo.com</a>
112 S Cummings St		Los Angeles, CA	90033	2	1895.00	Mark Nowfar	818-943-4371	<a href="mailto:laderallc@yahoo.com">laderallc@yahoo.com</a>
1706 Arlington Ave	5	Los Angeles, CA	90019	STUD	1640.00	Daisy Sanchez	626-655-0910	<a href="mailto:leasing@GetHomes.org">leasing@GetHomes.org</a>
1706 Arlington Ave	10	Los Angeles, CA	90019	STUD	1640.00	Daisy Sanchez	626-655-0910	<a href="mailto:leasing@GetHomes.org">leasing@GetHomes.org</a>
2901 E Olympic Blvd		Los Angeles, CA	90023	1	1111.00	Esther Haydel	415-969-9083	<a href="mailto:wyvernwood.cd@fpimgt.com">wyvernwood.cd@fpimgt.com</a>



# Emergency Housing Voucher (EHV)

## Available Units List

Email: [EHV.IP@hacla.org](mailto:EHV.IP@hacla.org)

Address	Unit #	City, State	Zip Code	BR Size	Rental Amount	Contact Person	Phone Number	Email
4122 Glenalbyn Dr	19	Los Angeles, CA	90065	0	1522.00	Matthew Hardy	323-221-6331	<a href="mailto:matthew.hardy@eahhousing.org">matthew.hardy@eahhousing.org</a>
8111 Reseda Blvd		Reseda, CA	91335	1	1750.00	Peter	818-462-8386	<a href="mailto:northviewmgr@davlyninvestments.co">northviewmgr@davlyninvestments.co</a>
8541 Foothill Blvd	204	Los Angeles, CA	91040	1	1495.00	A. Ramiro	323-803-7586	<a href="mailto:aramiro_18@yahoo.com">aramiro_18@yahoo.com</a>
206 S Coronado St	206	Los Angeles, CA	90057	STUD	1450.00	Frank	805-702-2579	<a href="mailto:beck.vineland@gmail.com">beck.vineland@gmail.com</a>
360 E 102nd St		Los Angeles, CA	90003	2	2450.00	Waheedi Ali	323-612-7180	<a href="mailto:waheedaali84@gmail.com">waheedaali84@gmail.com</a>
1320 S Burlington Ave		Los Angeles, CA	90006	1	1550.00	Briana	213-531-0356	<a href="mailto:info@westlandreg.com">info@westlandreg.com</a>
1320 S Burlington Ave		Los Angeles, CA	90006	STUD	1275.00	Briana	213-531-0356	<a href="mailto:info@westlandreg.com">info@westlandreg.com</a>
1771 N Vermont Ave		Los Angeles, CA	90027	STUD	1238.00	Silvia	323-667-2124	<a href="mailto:hollymont@abramgt.com">hollymont@abramgt.com</a>
1057 S Western Ave	218A	Los Angeles, CA	90006	0	1275.00	Sarah Kovalsky	323-986-9308	<a href="mailto:sarah.hoffmanbrothers@gmail.com">sarah.hoffmanbrothers@gmail.com</a>
1133 S Westmoreland / 2		Los Angeles, CA	90006	0	1225.00	Sarah Kovalsky	323-986-9308	<a href="mailto:sarah.hoffmanbrothers@gmail.com">sarah.hoffmanbrothers@gmail.com</a>
11425 S Figueroa St	15	Los Angeles, CA	90061	0	1250.00	Sarah Kovalsky	323-986-9308	<a href="mailto:sarah.hoffmanbrothers@gmail.com">sarah.hoffmanbrothers@gmail.com</a>
1310 S Wilton Pl	307	Los Angeles, CA	90019	0	1345.00	Sarah Kovalsky	323-986-9308	<a href="mailto:sarah.hoffmanbrothers@gmail.com">sarah.hoffmanbrothers@gmail.com</a>
1328 E 21st St	G	Los Angeles, CA	90011	Studi	1520.00	Daisy Sanchez	(626) 655-0910	<a href="mailto:Daisy@grayroseconsulting.com">Daisy@grayroseconsulting.com</a>
140 N Hoover St	226	Los Angeles, CA	90004	0	1295.00	Sarah Kovalsky	323-986-9308	<a href="mailto:sarah.hoffmanbrothers@gmail.com">sarah.hoffmanbrothers@gmail.com</a>
1403 E 23rd St	F	Los Angeles, CA	90011	0	950.00	Sarah Kovalsky	323-986-9308	<a href="mailto:sarah.hoffmanbrothers@gmail.com">sarah.hoffmanbrothers@gmail.com</a>
2028 Pennsylvania Ave	10	Los Angeles, CA	90033	0	1299.00	Sarah Kovalsky	323-986-9308	<a href="mailto:sarah.hoffmanbrothers@gmail.com">sarah.hoffmanbrothers@gmail.com</a>
2906 San Pedro St	E	Los Angeles, CA	90011	0	1195.00	Sarah Kovalsky	323-986-9308	<a href="mailto:sarah.hoffmanbrothers@gmail.com">sarah.hoffmanbrothers@gmail.com</a>
3009 Sierra St		Los Angeles, CA	90031	1	1350.00	Jonathan Paik	213-247-0727	<a href="mailto:weylandmgmt@gmail.com">weylandmgmt@gmail.com</a>
4817 S Gramercy Pl	5	Los Angeles, CA	90062	0	875.00	Sarah Kovalsky	323-986-9308	<a href="mailto:sarah.hoffmanbrothers@gmail.com">sarah.hoffmanbrothers@gmail.com</a>
5219 Longfellow St	5219	Los Angeles, CA	90042	1	1765.00	Tony	323-717-1151	<a href="mailto:mtwashboy@aol.com">mtwashboy@aol.com</a>



# Emergency Housing Voucher (EHV)

## Available Units List

Email: [EHV.IP@hacla.org](mailto:EHV.IP@hacla.org)

Address	Unit #	City, State	Zip Code	BR Size	Rental Amount	Contact Person	Phone Number	Email
5425 Santa Monica Blvd	302	Los Angeles, CA	90029	0	1395.00	Sarah Kovalsky	323-986-9308	<a href="mailto:sarah.hoffmanbrothers@gmail.com">sarah.hoffmanbrothers@gmail.com</a>
5475 Homeside Ave	10	Los Angeles, CA	90016	0	1295.00	Sarah Kovalsky	323-986-9308	<a href="mailto:sarah.hoffmanbrothers@gmail.com">sarah.hoffmanbrothers@gmail.com</a>
738 S Mariposa Ave	308	Los Angeles, CA	90005	STUD	1450.00	Beatriz	562-512-0731	<a href="mailto:beatriz.r@westlandreg.com">beatriz.r@westlandreg.com</a>
738 S Mariposa Ave	302	Los Angeles, CA	90005	STUD	1200.00	Beatriz	562-512-0731	<a href="mailto:beatriz.r@westlandreg.com">beatriz.r@westlandreg.com</a>
8707 Cedros Ave	7	Los Angeles, CA	91402	3	3230.00	Luana	310-750-0818	<a href="mailto:info@amiville.com">info@amiville.com</a>
975 S Oxford Ave	25	Los Angeles, CA	90006	0	1150.00	Sarah Kovalsky	323-986-9308	<a href="mailto:sarah.hoffmanbrothers@gmail.com">sarah.hoffmanbrothers@gmail.com</a>
975 S Oxford Ave	25A	Los Angeles, CA	90006	0	1150.00	Sarah Kovalsky	323-986-9308	<a href="mailto:sarah.hoffmanbrothers@gmail.com">sarah.hoffmanbrothers@gmail.com</a>
981 Elden Ave	18	Los Angeles, CA	90006	0	1395.00	Sarah Kovalsky	323-986-9308	<a href="mailto:sarah.hoffmanbrothers@gmail.com">sarah.hoffmanbrothers@gmail.com</a>
1033 S Westlake	17	Los Angeles, CA	90006	0	1445.00	Sarah Kovalsky	323-986-9308	<a href="mailto:sarah.hoffmanbrothers@gmail.com">sarah.hoffmanbrothers@gmail.com</a>
119 E 94th St		Los Angeles, CA	90003	1	1695.00	Ari Hoffman	323-907-0749	<a href="mailto:ahoff54@gmail.com">ahoff54@gmail.com</a>
119 E 94th St	A	Los Angeles, CA	90003	1	1695.00	Sarah Kovalsky	323-986-9308	<a href="mailto:sarah.hoffmanbrothers@gmail.com">sarah.hoffmanbrothers@gmail.com</a>
1328 E 21st St	B	Los Angeles, CA	90011	1	1765.00	Sarah Kovalsky	323-986-9308	<a href="mailto:sarah.hoffmanbrothers@gmail.com">sarah.hoffmanbrothers@gmail.com</a>
141 S Normandie Ave	7	Los Angeles, CA	90004	0	1395.00	Sarah Kovalsky	323-986-9308	<a href="mailto:sarah.hoffmanbrothers@gmail.com">sarah.hoffmanbrothers@gmail.com</a>
1507 16th St	8	Santa Monica, C	90404	1	1750.00	Sarah Kovalsky	323-986-9308	<a href="mailto:sarah.hoffmanbrothers@gmail.com">sarah.hoffmanbrothers@gmail.com</a>
1508 W Florence St	G	Los Angeles, CA	90011	STUD	1520.00	Daisy Sanchez	626-655-0910	<a href="mailto:Leasing@GetHomes.org">Leasing@GetHomes.org</a>
1525 Cassil Pl	104	Los Angeles, CA	90028	0	1395.00	Sarah Kovalsky	323-986-9308	<a href="mailto:sarah.hoffmanbrothers@gmail.com">sarah.hoffmanbrothers@gmail.com</a>
1605 W Vernon Ave	2	Los Angeles, CA	90062	1	1750.00	Sarah Kovalsky	323-986-9308	<a href="mailto:sarah.hoffmanbrothers@gmail.com">sarah.hoffmanbrothers@gmail.com</a>
1840 N Wilton Pl	A	Los Angeles, CA	90028	1	1735.00	Sarah Kovalsky	323-986-9308	<a href="mailto:sarah.hoffmanbrothers@gmail.com">sarah.hoffmanbrothers@gmail.com</a>
2360 W Washington Bl	6	Los Angeles, CA	90018	1	1800.00	Sarah Kovalsky	323-986-9308	<a href="mailto:sarah.hoffmanbrothers@gmail.com">sarah.hoffmanbrothers@gmail.com</a>
2360 W Washington Bl	4A	Los Angeles, CA	90018	0	1500.00	Sarah Kovalsky	323-986-9308	<a href="mailto:sarah.hoffmanbrothers@gmail.com">sarah.hoffmanbrothers@gmail.com</a>



# Emergency Housing Voucher (EHV)

## Available Units List

Email: [EHV.IP@hacla.org](mailto:EHV.IP@hacla.org)

Address	Unit #	City, State	Zip Code	BR Size	Rental Amount	Contact Person	Phone Number	Email
2589 Sepulveda Blvd	5	Los Angeles, CA	90064	0	1395.00	Sarah Kovalsky	323-986-9308	<a href="mailto:sarah.hoffmanbrothers@gmail.com">sarah.hoffmanbrothers@gmail.com</a>
301 N Sycamore Ave	12	Los Angeles, CA	90036	0	1495.00	Sarah Kovalsky	323-986-9308	<a href="mailto:sarah.hoffmanbrothers@gmail.com">sarah.hoffmanbrothers@gmail.com</a>
345 S Westlake Ave	20A	Los Angeles, CA	90057	0	1395.00	Sarah Kovalsky	323-986-9308	<a href="mailto:sarah.hoffmanbrothers@gmail.com">sarah.hoffmanbrothers@gmail.com</a>
3655 Midvale Ave	16	Los Angeles, CA	90034	0	1550.00	Sarah Kovalsky	323-986-9308	<a href="mailto:sarah.hoffmanbrothers@gmail.com">sarah.hoffmanbrothers@gmail.com</a>
410 S Manhattan Pl	208	Los Angeles, CA	90020	1	1845.00	Sarah Kovalsky	323-986-9308	<a href="mailto:sarah.hoffmanbrothers@gmail.com">sarah.hoffmanbrothers@gmail.com</a>
420 S Westlake Ave	220	Los Angeles, CA	90057	STUD	1275.00	Beatriz	562-512-0731	<a href="mailto:beatriz.r@westlandreg.com">beatriz.r@westlandreg.com</a>
420 S Westlake Ave	117	Los Angeles, CA	90057	STUD	1150.00	Beatriz	562-512-0731	<a href="mailto:beatriz.r@westlandreg.com">beatriz.r@westlandreg.com</a>
420 S Westlake Ave	116	Los Angeles, CA	90057	STUD	1150.00	Beatriz	562-512-0731	<a href="mailto:beatriz.r@westlandreg.com">beatriz.r@westlandreg.com</a>
517 W 92nd St	517	Los Angeles, CA	90044	2	2452.00	Daisy Sanchez	626-655-0910	<a href="mailto:Leasing@GetHomes.org">Leasing@GetHomes.org</a>
535 S Gramercy Pl	501	Los Angeles, CA	90020	0	1595.00	Sarah Kovalsky	323-986-9308	<a href="mailto:sarah.hoffmanbrothers@gmail.com">sarah.hoffmanbrothers@gmail.com</a>
716 E 81st St	A	Los Angeles, CA	90001	1	1675.00	Ari Hoffman	323-907-0749	<a href="mailto:ahoff54@gmail.com">ahoff54@gmail.com</a>
731 E Jefferson Blvd	4	Los Angeles, CA	90011	1	1695.00	Ari Hoffman	323-907-0749	<a href="mailto:ahoff54@gmail.com">ahoff54@gmail.com</a>
7604 S Figueroa	8	Los Angeles, CA	90011	2	2250.00	Daisy Sanchez	626-655-0910	<a href="mailto:Leasing@GetHomes.org">Leasing@GetHomes.org</a>
2056 Harvard Blvd		Los Angeles, CA	90018	2	2275.00	Roxana	213-531-0361	<a href="mailto:deaneapts@westlandreg.com">deaneapts@westlandreg.com</a>
225 W 25th St	16	Los Angeles, CA	90007	Studic	1300.00	Dana	323-306-4648	<a href="mailto:leasing@solarentals.com">leasing@solarentals.com</a>
10142 National Blvd	108	Los Angeles, CA	90034	2	2280.00	Gaby	310-838-1828	<a href="mailto:info@mdrents.com">info@mdrents.com</a>
10425 Woodbine Ave	8	Los Angeles, CA	90034	1	1870.00	Gaby	310-383-1828	<a href="mailto:info@mdrents.com">info@mdrents.com</a>
1117 S Shenandoah St	5	Los Angeles, CA	90034	1	1895.00	Gaby	310-838-1828	<a href="mailto:info@mdrents.com">info@mdrents.com</a>
11836 Darlinton Ave	8	Los Angeles, CA	90034	Studic	1480.00	Gaby	310-838-1828	<a href="mailto:info@mdrents.com">info@mdrents.com</a>
11852 Gorham Ave	1	Los Angeles, CA	90034	1	1780.00	Gaby	310-838-1828	<a href="mailto:info@mdrents.com">info@mdrents.com</a>



# Emergency Housing Voucher (EHV)

## Available Units List

Email: [EHV.IP@hacla.org](mailto:EHV.IP@hacla.org)

Address	Unit #	City, State	Zip Code	BR Size	Rental Amount	Contact Person	Phone Number	Email
1372 Sierra Bonita	7	Los Angeles, CA	90034	1	1780.00	Gaby	310-838-1828	<a href="mailto:info@mdrents.com">info@mdrents.com</a>
14417 Tiara St	101	Van Nuys, CA	91401	1	1723.00	Georgia Paston	323-227-5262	<a href="mailto:lincolnheightspts@ismrem.com">lincolnheightspts@ismrem.com</a>
1519 W 60th St		Los Angeles, CA	90044	4	3510.00	Kay Gill	714-276-4886	<a href="mailto:khushgill@att.net">khushgill@att.net</a>
1519 W 60th St		Los Angeles, CA	90044	2	2450.00	Kay Gill	714-276-4886	<a href="mailto:khushgill@att.net">khushgill@att.net</a>
16930 S Vermont Ave	6	Gardena, CA	90247	2	2200.00	Daisy Sanchez	626-655-0910	<a href="mailto:Leasing@GetHomes.org">Leasing@GetHomes.org</a>
210 W 43rd Pl	106	Los Angeles, CA	90037	Stu	1125.00	Georgia Paston	323-227-5260	<a href="mailto:lincolnheightspts@ismrem.com">lincolnheightspts@ismrem.com</a>
210 W 43rd Pl	309	Los Angeles, CA	90037	Stu	1125.00	Georgia Paston	323-227-5260	<a href="mailto:lincolnheightspts@ismrem.com">lincolnheightspts@ismrem.com</a>
306 W 77th St		Los Angeles, CA	90003	2	2150.00	Josh Shoumer	310-923-2898	<a href="mailto:joshshoumer@gmail.com">joshshoumer@gmail.com</a>
3320 Keystone Ave	8	Los Angeles, CA	90034	1	1810.00	Gaby	310-838-1828	<a href="mailto:info@mdrents.com">info@mdrents.com</a>
3333 N Mission	2319-8	Los Angeles, CA	90038	1	1395.00	Georgia Paston	323-227-5262	<a href="mailto:lincolnheightspts@ismrem.com">lincolnheightspts@ismrem.com</a>
3585 S Sepulveda Blvd	73	Los Angeles, CA	90034	1	1680.00	Gaby	310-838-1828	<a href="mailto:info@mdrents.com">info@mdrents.com</a>
3602 Keystone Ave	6	Los Angeles, CA	90034	1	1880.00	Gaby	310-838-1828	<a href="mailto:info@mdrents.com">info@mdrents.com</a>
3657 Keystone Ave	3	Los Angeles, CA	90034	3	2945.00	Gaby	310-838-1828	<a href="mailto:info@mdrents.com">info@mdrents.com</a>
3665 McLaughlin Ave	6	Los Angeles, CA	90034	1	1780.00	Gaby	310-838-1828	<a href="mailto:info@mdrents.com">info@mdrents.com</a>
3718 Clarington Ave	16	Los Angeles, CA	90034	1	1700.00	Gaby	310-838-1828	<a href="mailto:info@mdrents.com">info@mdrents.com</a>
3718 Clarington Ave	17	Los Angeles, CA	90034	Stu	1350.00	Gaby	310-838-1828	<a href="mailto:info@mdrents.com">info@mdrents.com</a>
3735 Jasmine Ave	7	Los Angeles, CA	90034	1	1725.00	Gaby	310-838-1828	<a href="mailto:info@mdrents.com">info@mdrents.com</a>
3747 Clarington Ave	8	Los Angeles, CA	90034	2	2425.00	Gaby	310-383-1828	<a href="mailto:info@mdrents.com">info@mdrents.com</a>
3763 Motor Ave	10	Los Angeles, CA	90034	Stu	1495.00	Gaby	310-838-1828	<a href="mailto:info@mdrents.com">info@mdrents.com</a>
3767 Motor Ave	10	Los Angeles, CA	90034	Stu	1495.00	Leasing Agent	310-383-1828	<a href="mailto:info@mdrents.com">info@mdrents.com</a>



# Emergency Housing Voucher (EHV)

## Available Units List

Email: [EHV.IP@hacla.org](mailto:EHV.IP@hacla.org)

Address	Unit #	City, State	Zip Code	BR Size	Rental Amount	Contact Person	Phone Number	Email
5171 Marathon St	71M10	Los Angeles, CA	90038	Studios	1395.00	Georgia Paston	323-227-5262	<a href="mailto:lincolnheightspts@ismrem.com">lincolnheightspts@ismrem.com</a>
632 1/4 W Imperial Hwy		Los Angeles, CA	90044	1	1920.00	Kay Gill	714-276-4886	<a href="mailto:khushgill@att.net">khushgill@att.net</a>
703 W 79th St	4	Los Angeles, CA	90044	2	2150.00	Daisy Sanchez	626-655-0910	<a href="mailto:Leasing@GetHomes.org">Leasing@GetHomes.org</a>
703 W 79th St	5	Los Angeles, CA	90044	2	2150.00	Daisy Sanchez	626-655-0910	<a href="mailto:Leasing@GetHomes.org">Leasing@GetHomes.org</a>
7406 1/4 Arizona		Los Angeles, CA	90034	1	1900.00	Gaby	310-838-1828	<a href="mailto:info@mdrents.com">info@mdrents.com</a>
7711 S San Pedro St	2	Los Angeles, CA	90003	2	2150.00	Daisy Sanchez	626-655-0910	<a href="mailto:Leasing@GetHomes.org">Leasing@GetHomes.org</a>
813 Alpine St	315	Los Angeles, CA	90034	1	1725.00	Joe Zhou	310-838-1828	<a href="mailto:info@mdrents.com">info@mdrents.com</a>
8812 Reading Ave	302	Los Angeles, CA	90034	2	2350.00	Gaby	310-838-1828	<a href="mailto:info@mdrents.com">info@mdrents.com</a>
8907 Ramsgate Ave	8	Los Angeles, CA	90034	2	2225.00	Gaby	310-838-1828	<a href="mailto:info@mdrents.com">info@mdrents.com</a>
9450 S Western Ave	7	Los Angeles, CA	90043	2	2045.00	Daisy Sanchez	626-655-0910	<a href="mailto:Leasing@GetHomes.org">Leasing@GetHomes.org</a>
1018 W 102nd St	A	Los Angeles, CA	90044	1	1550.00	Ari Hoffman	323-907-0749	<a href="mailto:ahoff54@gmail.com">ahoff54@gmail.com</a>
11201 S Broadway		Los Angeles, CA	90066	2	2451.00	Patrica Rhodes	310-417-3871	<a href="mailto:sassy14me@outlook.com">sassy14me@outlook.com</a>
11308 S Figueroa St	E	Los Angeles, CA	90061	2	2095.00	Ari Hoffman	323-907-0749	<a href="mailto:ahoff54@gmail.com">ahoff54@gmail.com</a>
1236 Rolland Curtis Pl		Los Angeles, CA	90037	2	2045.00	Ari Hoffman	323-907-0749	<a href="mailto:ahoff54@gmail.com">ahoff54@gmail.com</a>
1335 E 47th St	A	Los Angeles, CA	90011	2	2095.00	Ari Hoffman	323-907-0749	<a href="mailto:ahoff54@gmail.com">ahoff54@gmail.com</a>
1508 W Florence Ave	3	Los Angeles, CA	90044	2	2250.00	Daisy Sanchez	626-655-0910	<a href="mailto:Leasing@GetHomes.org">Leasing@GetHomes.org</a>
1552 E 32nd St	3	Los Angeles, CA	90011	2	2095.00	Ari Hoffman	323-907-0749	<a href="mailto:ahoff54@gmail.com">ahoff54@gmail.com</a>
1554 E 21 st	2	Los Angeles, CA	90011	2	2095.00	Ari Hoffman	323-907-0749	<a href="mailto:ahoff54@gmail.com">ahoff54@gmail.com</a>
1733 S New England St		Los Angeles, CA	90006	2	2452.00	Corazin Contreras	909-967-8512	<a href="mailto:admin@newventuresinc.net">admin@newventuresinc.net</a>
1845 Garfield Pl	3	Hollywood, CA	90028	1	1737.00	Zepora Piadozo	310-861-3515	<a href="mailto:leasing@powerpropertygrp.com">leasing@powerpropertygrp.com</a>



# Emergency Housing Voucher (EHV)

## Available Units List

Email: [EHV.IP@hacla.org](mailto:EHV.IP@hacla.org)

Address	Unit #	City, State	Zip Code	BR Size	Rental Amount	Contact Person	Phone Number	Email
2111 W Florence Ave	4	Los Angeles, CA	90047	2	2195.00	Ari Hoffman	323-907-0749	<a href="mailto:ahoff54@gmail.com">ahoff54@gmail.com</a>
2311 S Bentley Ave		Los Angeles, CA	90064	1	1795.00	Sarah Kovalsky	323-986-9307	<a href="mailto:sarah.hoffmanbrothers@gmail.com">sarah.hoffmanbrothers@gmail.com</a>
2503 W 6th St	207	Los Angeles, CA	90057	0	1395.00	Ari Hoffman	323-907-0749	<a href="mailto:ahoff54@gmail.com">ahoff54@gmail.com</a>
3838 Lockland Dr		Los Angeles, CA	90008	1	1764.00	Sarah Kovalsky	323-986-9308	<a href="mailto:sarah.hoffmanbrothers@gmail.com">sarah.hoffmanbrothers@gmail.com</a>
3900 W Adams Blvd	3	Los Angeles, CA	90018	2	2195.00	Daisy Sanchez	626-655-0910	<a href="mailto:Leasing@GetHomes.org">Leasing@GetHomes.org</a>
4140 McClung Dr	2	Los Angeles, CA	90008	1	1923.00	Patrica Rhodes	310-417-3871	<a href="mailto:sassy14me@outlook.com">sassy14me@outlook.com</a>
4147 McClung Dr	B	Los Angeles, CA	90066	2	2451.00	Patrica Rhodes	310-417-3871	<a href="mailto:sassy14me@outlook.com">sassy14me@outlook.com</a>
4147 McClung Dr	7	Los Angeles, CA	90066	1	1923.00	Patrica Rhodes	310-417-3871	<a href="mailto:sassy14me@outlook.com">sassy14me@outlook.com</a>
4147 McClung Dr	5	Los Angeles, CA	90066	1	1923.00	Patrica Rhodes	310-417-3871	<a href="mailto:sassy14me@outlook.com">sassy14me@outlook.com</a>
4147 McClung Dr	21	Los Angeles, CA	90066	1	1923.00	Patrica Rhodes	310-417-3871	<a href="mailto:sassy14me@outlook.com">sassy14me@outlook.com</a>
614 Hauser Blvd	112	Los Angeles, CA	90036	1	1650.00	Sarah Kovalsky	323-986-9308	<a href="mailto:sarah.hoffmanbrothers@gmail.com">sarah.hoffmanbrothers@gmail.com</a>
614 Hauser Blvd	112A	Los Angeles, CA	90036	1	1650.00	Sarah Kovalsky	323-986-9308	<a href="mailto:sarah.hoffmanbrothers@gmail.com">sarah.hoffmanbrothers@gmail.com</a>
6321 Crenshaw Blvd	8	Los Angeles, CA	90043	2	2095.00	Ari Hoffman	323-907-0749	<a href="mailto:ahoff54@gmail.com">ahoff54@gmail.com</a>
6541 Brynhurst St	207	Los Angeles, CA	90043	2	2451.00	Patrica Rhodes	310-417-3871	<a href="mailto:sassy14me@outlook.com">sassy14me@outlook.com</a>
845 W 84th St	#1/4	Los Angeles, CA	90044	1	1545.00	Ari Hoffman	323-907-0749	<a href="mailto:ahoff54@gmail.com">ahoff54@gmail.com</a>
847 W 84th St	#1/4	Los Angeles, CA	90044	1	1545.00	Ari Hoffman	323-907-0749	<a href="mailto:ahoff54@gmail.com">ahoff54@gmail.com</a>
850 W 95th St	3	Los Angeles, CA	90044	2	1995.00	Ari Hoffman	323-907-0749	<a href="mailto:ahoff54@gmail.com">ahoff54@gmail.com</a>
8911 S Figueroa St	1	Los Angeles, CA	90003	1	1545.00	Ari Hoffman	323-907-0749	<a href="mailto:ahoff54@gmail.com">ahoff54@gmail.com</a>
918 W 66th St	2	Los Angeles, CA	90044	2	2095.00	Ari Hoffman	323-907-0749	<a href="mailto:ahoff54@gmail.com">ahoff54@gmail.com</a>
1043 1/2 S Catalina St		Los Angeles, CA	90006	1	1695.00	Edi Hernandez	310-570-0093	<a href="mailto:edi@powerpropertygrp.com">edi@powerpropertygrp.com</a>



# Emergency Housing Voucher (EHV)

## Available Units List

Email: [EHV.IP@hacla.org](mailto:EHV.IP@hacla.org)

Address	Unit #	City, State	Zip Code	BR Size	Rental Amount	Contact Person	Phone Number	Email
11473 Riverside Dr	112	Valley Village, CA	91602	1	1895.00	Ken	818-452-9202	<a href="mailto:riversideaptsmgr@gmail.com">riversideaptsmgr@gmail.com</a>
14716 Victory Blvd		Van Nuys, CA	91411	1	1764.00	Karen	310-510-6270	<a href="mailto:karen@kingston.com">karen@kingston.com</a>
18632 Collins St		Tarzana, CA	91356	1	1795.00	Lisa	818-452-5352	<a href="mailto:manager.newporter@gmail.com">manager.newporter@gmail.com</a>
305 W 14th St	210	San Pedro, CA	90731	Studio	1642.00	Brent Hogan	213-503-0674	<a href="mailto:bhogan@hogangroupla.com">bhogan@hogangroupla.com</a>
3850 Potoma Ave	2	Los Angeles, CA	90006	1	1895.00	Edi Hernandez	310-570-0093	<a href="mailto:edi@powerpropertygrp.com">edi@powerpropertygrp.com</a>
729 1/2 W 74th St		Los Angeles, CA	90006	STUD	1350.00	Edi Hernandez	310-570-0093	<a href="mailto:edi@powerpropertygrp.com">edi@powerpropertygrp.com</a>
1334 Las Palmas	108	Los Angeles, CA	90028	1	1800.00	Mark	323-816-1661	<a href="mailto:mark@elitemg.com">mark@elitemg.com</a>
155 1/2 W 62nd St		Los Angeles, CA	90003	1	1750.00	Daisy Sanchez	323-441-6583	<a href="mailto:Daisy@grayroseconsulting.com">Daisy@grayroseconsulting.com</a>
501 S Burlington Ave	42	Los Angeles, CA	90057	1	1550.00	Daisy Sanchez	323-441-6583	<a href="mailto:Daisy@grayroseconsulting.com">Daisy@grayroseconsulting.com</a>
5126 Harold Way	1	Los Angeles, CA	90028	1	1800.00	Mark	323-816-1661	<a href="mailto:mark@elitemg.com">mark@elitemg.com</a>
5446 Sirra Vista	D	Los Angeles, CA	90038	1	1650.00	Mark	323-816-1661	<a href="mailto:mark@elitemg.com">mark@elitemg.com</a>
5446 Sirra Vista	A	Los Angeles, CA	90038	0	1450.00	Mark	323-816-1661	<a href="mailto:mark@elitemg.com">mark@elitemg.com</a>
5446 Sirra Vista	B	Los Angeles, CA	90038	0	1450.00	Mark	323-816-1661	<a href="mailto:mark@elitemg.com">mark@elitemg.com</a>
5446 Sirra Vista	C	Los Angeles, CA	90038	0	1450.00	Mark	323-816-1661	<a href="mailto:mark@elitemg.com">mark@elitemg.com</a>
5836 Harold Way	6	Los Angeles, CA	90028	1	1924.00	Mark	323-816-1661	<a href="mailto:mark@elitemg.com">mark@elitemg.com</a>
5836 Harold Way	12	Los Angeles, CA	90028	1	1924.00	Mark	323-816-1661	<a href="mailto:mark@elitemg.com">mark@elitemg.com</a>
719 W 47th St	3	Los Angeles, CA	90037	1	1749.00	Daisy Sanchez	323-441-6583	<a href="mailto:Daisy@grayroseconsulting.com">Daisy@grayroseconsulting.com</a>
871 N Oxford Ave	2	Los Angeles, CA	90029	0	1550.00	Daisy Sanchez	323-441-6583	<a href="mailto:Daisy@grayroseconsulting.com">Daisy@grayroseconsulting.com</a>
1103 W 64th St		Los Angeles, CA	90044	Studio	1369.00	Sola Rental Repre	323-306-4648	<a href="mailto:leasing@solarentals.com">leasing@solarentals.com</a>
200 W Slauson Ave		Los Angeles, CA	90003	Studio	1369.00	Sola Rental Repre	323-306-4648	<a href="mailto:leasing@solarentals.com">leasing@solarentals.com</a>





# Emergency Housing Voucher (EHV)

## Available Units List

Email: [EHV.IP@hacla.org](mailto:EHV.IP@hacla.org)

Address	Unit #	City, State	Zip Code	BR Size	Rental Amount	Contact Person	Phone Number	Email
250 E 81st St		Los Angeles, CA	90003	1	1605.00	Sola Rental Repre	323-306-4648	<a href="mailto:leasing@solarentals.com">leasing@solarentals.com</a>
300 E Washington Blvd		Los Angeles, CA	90015	Stu	1369.00	Sola Rental Repre	323-306-4648	<a href="mailto:leasing@solarentals.com">leasing@solarentals.com</a>
317 W 76th St		Los Angeles, CA	90003	2	2050.00	Sola Rental Repre	323-306-4648	<a href="mailto:leasing@solarentals.com">leasing@solarentals.com</a>
327 W 45th St		Los Angeles, CA	90037	Stu	1369.00	Sola Rental Repre	323-306-4648	<a href="mailto:leasing@solarentals.com">leasing@solarentals.com</a>
339 w 71st St		Los Angeles, CA	90003	4	3519.00	Adrian Aviles		<a href="mailto:213aviles@gmail.com">213aviles@gmail.com</a>
4355 Avalon Blvd		Los Angeles, CA	90011	1	1605.00	Sola Rental Repre	323-306-4648	<a href="mailto:leasing@solarentals.com">leasing@solarentals.com</a>
553 Stanford Ave		Los Angeles, CA	90013	1	1605.00	Sola Rental Repre	323-306-4648	<a href="mailto:leasing@solarentals.com">leasing@solarentals.com</a>
6101 Compton Ave		Los Angeles, CA	90001	Stu	1400.00	Sola Rental Repre	323-306-4648	<a href="mailto:leasing@solarentals.com">leasing@solarentals.com</a>
6209 S Hoover St		Los Angeles, CA	90044	1	1605.00	Sola Rental Repre	323-306-4648	<a href="mailto:leasing@solarentals.com">leasing@solarentals.com</a>
7675 S San Pedro St		Los Angeles, CA	90003	1	1605.00	Sola Rental Repre	323-3064648	<a href="mailto:leasing@solarentals.com">leasing@solarentals.com</a>
836 W 66th St		Los Angeles, CA	90044	1	1605.00	Sola Rental Repre	323-306-4648	<a href="mailto:leasing@solarentals.com">leasing@solarentals.com</a>
9515 Compton Ave		Los Angeles, CA	90002	1	1765.00	Sola Rental Repre	323-306-4648	<a href="mailto:leasing@solarentals.com">leasing@solarentals.com</a>
10626 S Budlong Ave	1	Los Angeles, CA	90044	2	2195.00	Daisy Sanchez	323-655-0910	<a href="mailto:Leasing@GetHomes.org">Leasing@GetHomes.org</a>
10626 S Budlong Ave	6	Los Angeles, CA	90044	2	2195.00	Daisy Sanchez	323-655-0910	<a href="mailto:Leasing@GetHomes.org">Leasing@GetHomes.org</a>
127 1/4 E 104th St		Los Angeles, CA	90003	1	1605.00	Keith Williams	323-628-7479	<a href="mailto:keith@solarentals.com">keith@solarentals.com</a>
15255 Cantlay St	6	Van Nuys, CA	91405	1	1895.00	Daisy Sanchez	323-655-0910	<a href="mailto:Leasing@GetHomes.org">Leasing@GetHomes.org</a>
5125 S Victoria Ave	7	Los Angeles, CA	90043	2	2100.00	Daisy Sanchez	323-655-0910	<a href="mailto:Leasing@GetHomes.org">Leasing@GetHomes.org</a>
6211 S Hoover		Los Angeles, CA	90044	1	1605.00	Keith Williams	323-628-7479	<a href="mailto:keith@solarentals.com">keith@solarentals.com</a>
6910 1/2 S Hoover St		Los Angeles, CA	90044	1	1605.00	Keith Williams	323-628-7479	<a href="mailto:keith@solarentals.com">keith@solarentals.com</a>
6930 S Vermont Ave	6	Gardena, CA	90247	2	2200.00	Daisy Sanchez	323-655-0910	<a href="mailto:Leasing@GetHomes.org">Leasing@GetHomes.org</a>



# Emergency Housing Voucher (EHV)

## Available Units List

Email: [EHV.IP@hacla.org](mailto:EHV.IP@hacla.org)

Address	Unit #	City, State	Zip Code	BR Size	Rental Amount	Contact Person	Phone Number	Email
7609 S Figueroa St	8	Los Angeles, CA	90011	2	2250.00	Daisy Sanchez	323-655-0910	<a href="mailto:Leasing@GetHomes.org">Leasing@GetHomes.org</a>
129 N Soto St	127	Los angeles, CA	90033	2	2400.00	Sam Suliman	323-304-1343	<a href="mailto:sam@asinvestprops.com">sam@asinvestprops.com</a>
1400 Eagle Vista Dr		Los Angeles, CA	90041	1	1825.00	Alan Chen	310-254-8709	<a href="mailto:alan_c_chen@yahoo.com">alan_c_chen@yahoo.com</a>
14133 Calvert St		Los angeles, CA	91401	1	1875.00	Gabriel	844-2791533	<a href="mailto:maintenance@kigcapital.com">maintenance@kigcapital.com</a>
1737 1/4 W 64th St		Los angeles, CA	90047	1	1765.00	Daisy Sanchez	323-441-6583	<a href="mailto:Daisy@grayroseconsulting.com">Daisy@grayroseconsulting.com</a>
1737 W 64th St	1737	Los angeles, CA	90047	1	1765.00	Daisy Sanchez	323-441-6583	<a href="mailto:Daisy@grayroseconsulting.com">Daisy@grayroseconsulting.com</a>
3206 W 60th St	2	Los angeles, CA	90043	2	2195.00	Daisy Sanchez	323-441-6583	<a href="mailto:Daisy@grayroseconsulting.com">Daisy@grayroseconsulting.com</a>
4060 Stevely Ave	23	Los angeles, CA	90008	2	2195.00	Daisy Sanchez	323-441-6583	<a href="mailto:Daisy@grayroseconsulting.com">Daisy@grayroseconsulting.com</a>
4107 Buckingham Rd	D	Los angeles, CA	90008	2	2449.00	Daisy Sanchez	323-441-6583	<a href="mailto:Daisy@grayroseconsulting.com">Daisy@grayroseconsulting.com</a>
4418 W Pico Blvd	203	Los angeles, CA	90019	2	2395.00	Daisy Sanchez	323-441-6583	<a href="mailto:Daisy@grayroseconsulting.com">Daisy@grayroseconsulting.com</a>
634 92nd Street	16	Los angeles, CA	90044	2	1995.00	Daisy Sanchez	323-441-6583	<a href="mailto:Daisy@grayroseconsulting.com">Daisy@grayroseconsulting.com</a>
1351 W Vernon Ave	4	Los Angeles, CA	90011	2	2395.00	Daisy Sanchez	626-655-0910	<a href="mailto:Leasing@GetHomes.org">Leasing@GetHomes.org</a>
143 S Burlington Ave	01-316	Los Angeles, CA	90057	1	1750.00	Kennisha Williams: 213-205-2703		<a href="mailto:kennishawilliams@mosscompany.com">kennishawilliams@mosscompany.com</a>
143 S Burlington Ave	03-114	Los Angeles, CA	90057	1	1750.00	Kennisha Williams: 213-205-2703		<a href="mailto:kennishawilliams@mosscompany.com">kennishawilliams@mosscompany.com</a>
143 S Burlington Ave	02-308	Los Angeles, CA	90057	1	1750.00	Kennisha Williams: 213-205-2703		<a href="mailto:kennishawilliams@mosscompany.com">kennishawilliams@mosscompany.com</a>
143 S Burlington Ave	02-121	Los Angeles, CA	90057	2	2300.00	Kennisha Williams: 213-205-2703		<a href="mailto:kennishawilliams@mosscompany.com">kennishawilliams@mosscompany.com</a>
143 S Burlington Ave	03-217	Los Angeles, CA	90057	2	2350.00	Kennisha Williams: 213-205-2703		<a href="mailto:kennishawilliams@mosscompany.com">kennishawilliams@mosscompany.com</a>
17087 Chatsworth St	212	Granada Hills, C	91344	1	1750.00	Maggie	323-470-6282	<a href="mailto:info@yalemanagementservices">info@yalemanagementservices</a>
17830 Merridy St	304	Northridge, CA	91325	1	1667.00	Shannon Monks	818-924-4707	<a href="mailto:shannonmonks@mosscompnay.com">shannonmonks@mosscompnay.com</a>
17900 Sherman Way	214	Los Angeles, CA	90018	1	1650.00	Maggie	323-470-6282	<a href="mailto:info@yalemanagementservices">info@yalemanagementservices</a>



# Emergency Housing Voucher (EHV)

## Available Units List

Email: [EHV.IP@hacla.org](mailto:EHV.IP@hacla.org)

Address	Unit #	City, State	Zip Code	BR Size	Rental Amount	Contact Person	Phone Number	Email
18013 Devonshire St		Northridge, CA	91325	1	1873.00	Edward	818-850-7890	<a href="mailto:cambridge@primegrp.com">cambridge@primegrp.com</a>
18013 Devonshire St		Northridge, CA	91325	2	2242.00	Edward	818-850-7890	<a href="mailto:cambridge@primegrp.com">cambridge@primegrp.com</a>
240 E 80th St		Los angeles, CA	90003	4	3519.00	Latea Wilson	323-758-3909	<a href="mailto:jus4mejdd@hotmail.com">jus4mejdd@hotmail.com</a>
3066 W 7th St		Los Angeles, CA	90005	Stu	1275.00	Westland Apartm	213-531-0358	<a href="mailto:7thstreetapts@westlandreg.com">7thstreetapts@westlandreg.com</a>
3939 Roxanne Ave		Los Angeles, CA	90008	1	1750.00	Westland Apartm	323-601-1093	<a href="mailto:roxanneapts@westlandreg.com">roxanneapts@westlandreg.com</a>
3939 Roxanne Ave		Los Angeles, CA	90008	2	2200.00	Westland Apartm	323-601-1093	<a href="mailto:roxanneapts@westlandreg.com">roxanneapts@westlandreg.com</a>
4025 Coco Ave	18	Los Angeles, CA	90008	2	2452.00	Perry Wong	714-425-7920	<a href="mailto:perrydadwong@gmail.com">perrydadwong@gmail.com</a>
6337 10th Ave	B	Los Angeles, CA	90043	4	2999.00	Sarah Kovalsky	323-986-9308	<a href="mailto:sarah.hoffmanbrothers@gmail.com">sarah.hoffmanbrothers@gmail.com</a>
6929 Kester Ave		Van Nuys, CA	91405	1	1695.00	Betty	818-661-1033	<a href="mailto:nelkmanor@mosscompnay.com">nelkmanor@mosscompnay.com</a>
701 Gramercy Dr		Los Angeles, CA	90005	Stu	1350.00	Alex	818-446-5445	<a href="mailto:ancelleapts@mosscompany.com">ancelleapts@mosscompany.com</a>
7441 Hazeltine Ave	204A	Van Nuys, CA	91405	3	2645.00	Sarah Kovalsky	323-986-9308	<a href="mailto:sarah.hoffmanbrothers@gmail.com">sarah.hoffmanbrothers@gmail.com</a>
251 Robinson St	103	Los Angeles CA	90026	2	2345.00	Sarah Kovalsky	323-986-9308	<a href="mailto:sarah.hoffmanbrothers@gmail.com">sarah.hoffmanbrothers@gmail.com</a>
3460 Jasmine Ave	202	Los Angeles, CA	90034	2	2345.00	Sarah Kovalsky	323-986-9308	<a href="mailto:sarah.hoffmanbrothers@gmail.com">sarah.hoffmanbrothers@gmail.com</a>
730 W El Segundo Blvd	3-310	Los Angeles, CA	90247	2	1850.00	Westland Apartm	844-340-9910	<a href="mailto:harborview@westlandreg.com">harborview@westlandreg.com</a>
730 W El Segundo Blvd	4-117	Los Angeles, CA	90247	2	1950.00	Westland Apartm	844-340-9910	<a href="mailto:harborview@westlandreg.com">harborview@westlandreg.com</a>
730 W El Segundo Blvd	3-109	Los Angeles, CA	90247	2	1950.00	Westland Apartm	844-340-9910	<a href="mailto:harborview@westlandreg.com">harborview@westlandreg.com</a>
730 W El Segundo Blvd	3-205	Los Angeles, CA	90247	2	1950.00	Westland Apartm	844-340-9910	<a href="mailto:harborview@westlandreg.com">harborview@westlandreg.com</a>
730 W El Segundo Blvd	4-318	Los Angeles, CA	90247	2	1950.00	Westland Apartm	844-340-9910	<a href="mailto:harborview@westlandreg.com">harborview@westlandreg.com</a>
738 S Mariposa Ave		Los Angeles, CA	90005	SRO	1200.00	Beatriz Rodas	213-531-0359	<a href="mailto:beatriz.r@westlandreg.com">beatriz.r@westlandreg.com</a>
7810 Topanga Canyon Blvd		Canoga Pakr, CA	91304	Stu	1195.00	Rowena	213-277-9526	<a href="mailto:shawn.b@nmsresidential.com">shawn.b@nmsresidential.com</a>



# Emergency Housing Voucher (EHV)

## Available Units List

Email: [EHV.IP@hacla.org](mailto:EHV.IP@hacla.org)

Address	Unit #	City, State	Zip Code	BR Size	Rental Amount	Contact Person	Phone Number	Email
9141 Baring Cross		Los Angeles, CA	90044	2	2200.00	Cynthia Jackson	562-754-9965	<a href="mailto:cpjac@att.net">cpjac@att.net</a>
9141 Baring Cross		Los Angeles, CA	90044	3	2900.00	Cynthia Jackson	562-754-9965	<a href="mailto:cpjac@att.net">cpjac@att.net</a>
10130 Sepulveda		Mission Hills, CA	91345	1	1725.00	monica Ramirez	818-493-5430	<a href="mailto:monicaramirez@mosscompany.com">monicaramirez@mosscompany.com</a>
10961 S Figueroa St	5	Los Angeles, CA	90061	1	1750.00	Caty Moore	626-655-0910	<a href="mailto:Caty@grayroseconsulting.com">Caty@grayroseconsulting.com</a>
10961 S Figueroa St	12	Los Angeles, CA	90061	1	1750.00	Caty Moore	626-655-0910	<a href="mailto:Caty@grayroseconsulting.com">Caty@grayroseconsulting.com</a>
10961 S Figueroa St	3	Los Angeles, CA	90061	Studio	1295.00	Caty Moore	626-655-0910	<a href="mailto:Caty@grayroseconsulting.com">Caty@grayroseconsulting.com</a>
10961 S Figueroa St	4	Los Angeles, CA	90061	Studio	1295.00	Caty Moore	626-655-0910	<a href="mailto:Caty@grayroseconsulting.com">Caty@grayroseconsulting.com</a>
151 E 95th St		Los Angeles, CA	90003	2	2263.00	Cassandra Winsto	424-318-2096	<a href="mailto:programs@section8management.com">programs@section8management.com</a>
1737 1/4 W 64th St	4	Los Angeles, CA	90047	1	1765.00	Caty Moore	626-655-0910	<a href="mailto:Caty@grayroseconsulting.com">Caty@grayroseconsulting.com</a>
1853 Cordova St		Los Angeles, CA	90007	2	1895.00	Westland Apartm	213-531-0340	<a href="mailto:cordovaapts@westlandreg.com">cordovaapts@westlandreg.com</a>
1883 Cordova St		Los Angeles, CA	90007	2	1895.00	Westland Apartm	213-531-0340	<a href="mailto:cordovaapts@westlandreg.com">cordovaapts@westlandreg.com</a>
1884 Cordova St		Los Angeles, CA	90007	2	1895.00	Westland Apartm	213-531-0340	<a href="mailto:cordovaapts@westlandreg.com">cordovaapts@westlandreg.com</a>
1887 Cordova St		Los Angeles, CA	90007	2	1895.00	Westland Apartm	213-531-0340	<a href="mailto:cordovaapts@westlandreg.com">cordovaapts@westlandreg.com</a>
2621 Pasadena Ave	3	Los Angeles, CA	90031	2	2150.00	Cassandra Winsto	424-318-2096	<a href="mailto:programs@section8management.com">programs@section8management.com</a>
2621 Pasadena Ave	10	Los Angeles, CA	90031	2	2150.00	Cassandra Winsto	424-318-2096	<a href="mailto:programs@section8management.com">programs@section8management.com</a>
11722 1/2 Magnolia Blvd		Valley Village, CA	91607	2	2295.00	Jeffrey	818-766-7727	<a href="mailto:leasing@pacprop.net">leasing@pacprop.net</a>
12150 Oxnard St	6	North Hollywood, CA	91606	1	1750.00	Jeffrey	818-766-7727	<a href="mailto:leasing@pacprop.net">leasing@pacprop.net</a>
13800 Sherman Way	208	Valley Glen, CA	91405	1	1695.00	Jeffrey	818-766-7727	<a href="mailto:leasing@pacprop.net">leasing@pacprop.net</a>
13849 Chase St	6	Panorama City, CA	91402	1	1750.00	Jeffrey	818-766-7727	<a href="mailto:leasing@pacprop.net">leasing@pacprop.net</a>
14033 Bessemer St	101	Valley Glen, CA	91401	1	1850.00	Jeffrey	818-766-7727	<a href="mailto:leasing@pacprop.net">leasing@pacprop.net</a>



# Emergency Housing Voucher (EHV)

## Available Units List

Email: [EHV.IP@hacla.org](mailto:EHV.IP@hacla.org)

Address	Unit #	City, State	Zip Code	BR Size	Rental Amount	Contact Person	Phone Number	Email
14120 Hamlin Street	16	Valley Glen, CA	91401	1	1795.00	Jeffrey	818-766-7727	<a href="mailto:leasing@pacprop.net">leasing@pacprop.net</a>
14312 Tiara Street	1	Sherman Oaks, CA	91401	0	1550.00	Jeffrey	818-766-7727	<a href="mailto:leasing@pacprop.net">leasing@pacprop.net</a>
3975 Princeton Ave		Los Angeles, CA	90023	1	1750.00	Rob	310-869-6605	<a href="mailto:hanlellc@gmail.com">hanlellc@gmail.com</a>
4046 Coco Ave		Los Angeles, CA	90008	1	1750.00	Steven Alsaro	323-825-5942	<a href="mailto:stevenalsaro@mosscompany.com">stevenalsaro@mosscompany.com</a>
4107 Harvard Blvd	1	Los Angeles, CA	90062	SRO	1200.00	Aldonia Wylie	213-292-1328	<a href="mailto:grnhouze@gmail.com">grnhouze@gmail.com</a>
4107 Harvard Blvd	2	Los Angeles, CA	90062	SRO	1200.00	Aldonia Wylie	213-292-1328	<a href="mailto:grnhouze@gmail.com">grnhouze@gmail.com</a>
4107 Harvard Blvd	3	Los Angeles, CA	90062	SRO	1200.00	Aldonia Wylie	213-292-1328	<a href="mailto:grnhouze@gmail.com">grnhouze@gmail.com</a>
4107 Harvard Blvd	4	Los Angeles, CA	90062	SRO	1200.00	Aldonia Wylie	213-292-1328	<a href="mailto:grnhouze@gmail.com">grnhouze@gmail.com</a>
425 S New Hampshire /	310	Los Angeles, CA	90020	1	1600.00	Zaya	213-747-8504	<a href="mailto:wcmcenter@yahoo.com">wcmcenter@yahoo.com</a>
4334 Mammoth Ave	10	Sherman Oaks, CA	91423	3	3150.00	Jeffrey	818-766-7727	<a href="mailto:leasing@pacprop.net">leasing@pacprop.net</a>
4515 August St	15	Los Angeles, CA	90008	1	1849.00	Caty Moore	626-655-0910	<a href="mailto:Caty@grayroseconsulting.com">Caty@grayroseconsulting.com</a>
454 South Catalina		Los Angeles, CA	90020	Studios	1200.00	Moss & Company	213-334-3853	<a href="mailto:catalinaaveapts@mosscompany.com">catalinaaveapts@mosscompany.com</a>
4555 W Martin Luther King Jr B		Los Angeles, CA	90016	2	2390.00	Michael	424-344-5654	<a href="mailto:residenceswoodlake.cd@fpimgt.com">residenceswoodlake.cd@fpimgt.com</a>
4609 Coliseum St		Los Angeles, CA	90016	1	1595.00	Westland Apartm	323-601-1093	<a href="mailto:coliseumapts@westlandreg.com">coliseumapts@westlandreg.com</a>
4663 Coliseum St		Los Angeles, CA	90016	1	1595.00	Westland Apartm	323-601-1093	<a href="mailto:coliseumapts@westlandreg.com">coliseumapts@westlandreg.com</a>
4925 Beverly Blvd	17	Los Angeles, CA	90004	Studios	1250.00	Zaya	213-474-8504	<a href="mailto:wcmcenter@yahoo.com">wcmcenter@yahoo.com</a>
5255 Blakeslee Ave	2	North Hollywood	91601	1	1750.00	Jeffrey	818-766-7727	<a href="mailto:leasing@pacprop.net">leasing@pacprop.net</a>
5919 Fair Ave		North Hollywood	91601	1	1795.00	Jeffrey	818-766-7727	<a href="mailto:leasing@pacprop.net">leasing@pacprop.net</a>
6112 W Eleanor Ave	7	Los Angeles, CA	90038	1	1795.00	Samantha	310-361-9785	<a href="mailto:leasing@benleedsproperties.com">leasing@benleedsproperties.com</a>
6115 Whitsett Ave	109	Valley Village, CA	91606	1	1795.00	Jeffrey	818-766-7727	<a href="mailto:leasing@pacprop.net">leasing@pacprop.net</a>



# Emergency Housing Voucher (EHV)

## Available Units List

Email: [EHV.IP@hacla.org](mailto:EHV.IP@hacla.org)

Address	Unit #	City, State	Zip Code	BR Size	Rental Amount	Contact Person	Phone Number	Email
6512 Woodman Ave	12A	Valley Glen, CA	91401	3	2650.00	Jeffrey	818-766-7727	<a href="mailto:leasing@pacprop.net">leasing@pacprop.net</a>
6908 S Hoover St		Los Angeles, CA	90044	1	1605.00	Sola Rental Repre	323-306-4648	<a href="mailto:leasing@solarentals.com">leasing@solarentals.com</a>
717 S Carondelet St		Los Angeles, CA	90057	2	1995.00	Westland Apartm	310-373-7770	<a href="mailto:deanapts@westlandreg.com">deanapts@westlandreg.com</a>
7416 S Vermont Ave		Los Angeles, CA	90044	2	1795.00	Sola Rental Repre	323-306-4648	<a href="mailto:leasing@solarentals.com">leasing@solarentals.com</a>
832 W Florence	7	Los Angeles, CA	90044	1	1520.00	Caty Moore	626-655-0910	<a href="mailto:Caty@grayroseconsulting.com">Caty@grayroseconsulting.com</a>
832 W Florence	8	Los Angeles, CA	90044	1	1520.00	Caty Moore	626-655-0910	<a href="mailto:Caty@grayroseconsulting.com">Caty@grayroseconsulting.com</a>
837 W 82nd St	104	Los Angeles CA	90044	2	2452.00	Will Wright	703-984-9607	<a href="mailto:will@flyawayhomes.org">will@flyawayhomes.org</a>
8911 S Figueroa St	2	Los Angeles, CA	90003	1	1750.00	Caty Moore	626-655-0910	<a href="mailto:Caty@grayroseconsulting.com">Caty@grayroseconsulting.com</a>
8911 S Figueroa St	8	Los Angeles, CA	90003	1	1750.00	Caty Moore	626-655-0910	<a href="mailto:Caty@grayroseconsulting.com">Caty@grayroseconsulting.com</a>
8911 S Figueroa St	6	Los Angeles, CA	90003	1	1750.00	Caty Moore	626-655-0910	<a href="mailto:Caty@grayroseconsulting.com">Caty@grayroseconsulting.com</a>
8911 S Figueroa St	10	Los Angeles, CA	90003	1	1750.00	Caty Moore	626-655-0910	<a href="mailto:Caty@grayroseconsulting.com">Caty@grayroseconsulting.com</a>
8911 S Figueroa St	11	Los Angeles, CA	90003	1	1750.00	Caty Moore	626-655-0910	<a href="mailto:Caty@grayroseconsulting.com">Caty@grayroseconsulting.com</a>
908 S Normandie Ave		Los Angeles, CA	90006	Studi	1500.00	Malu	323-933-3971	<a href="mailto:eshelreality@gmail.com">eshelreality@gmail.com</a>
922 W 25th St		San Pedro, CA	90731	2	2400.00	Andrew Eskander	626-679-1589	<a href="mailto:andreweskander@gmail.com">andreweskander@gmail.com</a>
12746 1/2 N Bromont Ave		San Fernando, C	91340	1	1700.00	Frank Hakim	408-351-3168	<a href="mailto:hakim.mgmt.llc@gmail.com">hakim.mgmt.llc@gmail.com</a>
156 W 73rd St		Los Angeles, CA	90001	4	3200.00	Alberto Romero	562-295-5050	<a href="mailto:alberto.ar.romero@gmail.com">alberto.ar.romero@gmail.com</a>
158 W 73rd St		Los Angeles, CA	90001	4	3000.00	Alberto Romero	562-295-5050	<a href="mailto:alberto.ar.romero@gmail.com">alberto.ar.romero@gmail.com</a>
703 N Fickett St		Los Angeles, CA	90033	1	780.00	Lee Marie	562-972-5500	<a href="mailto:leemarie131460@gmail.com">leemarie131460@gmail.com</a>
334 N Heliotrope Dr	207	Los Angeles, CA	90004	Studi	1295.00	Thiago	530-576-5378	<a href="mailto:thiago@firstlightpm.com">thiago@firstlightpm.com</a>
647 W 18th St	306	Los Angeles, CA	90015	Studi	745.00	Thiago	530-576-5378	<a href="mailto:thiago@firstlightpm.com">thiago@firstlightpm.com</a>



# Emergency Housing Voucher (EHV)

## Available Units List

Email: [EHV.IP@hacla.org](mailto:EHV.IP@hacla.org)

Address	Unit #	City, State	Zip Code	BR Size	Rental Amount	Contact Person	Phone Number	Email
738 S New Hampshire / 406		Los Angeles, CA	90005	Studios	1295.00	Thiago	530-576-5378	<a href="mailto:thiago@firstlightpm.com">thiago@firstlightpm.com</a>
1375 S Sierra Bonita Av	2	Los Angeles, CA	90019	1	1845.00	Jay	310-361-8032	<a href="mailto:info@mdrents.com">info@mdrents.com</a>
1431 S Holt Ave	3	Los Angeles, CA	90035	1	1850.00	Leasing Agent	310-838-1828	<a href="mailto:info@mdrents.com">info@mdrents.com</a>
1563 S Orange Ave	4	Los Angeles, CA	90019	2	1995.00	Leasing Agent	310-838-1828	<a href="mailto:info@mdrents.com">info@mdrents.com</a>
3609 Mentone Ave	5	Los Angeles, CA	90034	2	2180.00	Leasing Agent	310-838-1828	<a href="mailto:info@mdrents.com">info@mdrents.com</a>
3711 Glendon Ave	307	Los Angeles, Ca	90034	1	1895.00	Manager	310-733-8564	<a href="mailto:info@mdrents.com">info@mdrents.com</a>
3718 Clarington Ave	12	Los Angeles, CA	90034	1	1675.00	Chelsea Collins	310-838-1828	<a href="mailto:info@mdrents.com">info@mdrents.com</a>
3718 Clarington Ave	21	Los Angeles, CA	90034	1	1675.00	Chelsea Collins	310-838-1828	<a href="mailto:info@mdrents.com">info@mdrents.com</a>
3729 Westwood Blvd	22	Los Angeles, CA	90034	Studios	1540.00	Kimberly	310-838-1828	<a href="mailto:info@mdrents.com">info@mdrents.com</a>
812 Esperanza St		Los Angeles, CA	90023	1	1924.00	Cipriano Limon	323-683-1153	<a href="mailto:jlimon86@yahoo.com">jlimon86@yahoo.com</a>
8456 Blackdown Ave	7	Los Angeles, CA	90048	1	1810.00	Leasing Agent	310-838-1828	<a href="mailto:info@mdrents.com">info@mdrents.com</a>
8655 W Pico St	7	Los Angeles, CA	90035	2	1975.00	Leasing Agent	310-838-1828	<a href="mailto:info@mdrents.com">info@mdrents.com</a>
927 S Alma Ave		Los Angeles, CA	90022	1	1900.00	Ernesto Mora	818-421-6664	<a href="mailto:noemimora714@gmail.com">noemimora714@gmail.com</a>
14696 Ryen St		Panorama City, CA	91402	1	1400.00	Roberto	818-873-4210	<a href="mailto:roberto@pamc.rental.com">roberto@pamc.rental.com</a>
1839 W Florence Ave		Los Angeles, CA	90047	1	1924.00	Theresa Mmeje	310-866-1226	<a href="mailto:ezioma79@gmail.com">ezioma79@gmail.com</a>
4116 Palmyra Rd	4	Los Angeles, CA	90008	1	1924.00	Theresa Mmeje	310-866-1226	<a href="mailto:ezioma79@gmail.com">ezioma79@gmail.com</a>
639 E Martin Luther King Jr	8	Los Angeles, CA	90011	1	1695.00	Caty Moore	626-655-0910	<a href="mailto:Leasing@GetHomes.org">Leasing@GetHomes.org</a>
731 E Jefferson Blvd	2	Los Angeles, CA	90011	1	1750.00	Caty Moore	626-655-0910	<a href="mailto:Leasing@GetHomes.org">Leasing@GetHomes.org</a>
847 W 84th St	1	Los Angeles, CA	90044	1	1749.00	Caty Moore	626-655-0910	<a href="mailto:Leasing@GetHomes.org">Leasing@GetHomes.org</a>
847 W 84th St	2	Los Angeles, CA	90044	1	1749.00	Caty Moore	626-655-0910	<a href="mailto:Leasing@GetHomes.org">Leasing@GetHomes.org</a>



# Emergency Housing Voucher (EHV)

## Available Units List

Email: [EHV.IP@hacla.org](mailto:EHV.IP@hacla.org)

Address	Unit #	City, State	Zip Code	BR Size	Rental Amount	Contact Person	Phone Number	Email
847 W 84th St	3	Los Angeles, CA	90044	1	1749.00	Caty Moore	626-655-0910	<a href="mailto:Leasing@GetHomes.org">Leasing@GetHomes.org</a>
847 W 84th St	4	Los Angeles, CA	90044	1	1749.00	Caty Moore	626-655-0910	<a href="mailto:Leasing@GetHomes.org">Leasing@GetHomes.org</a>
847 W 84th St	5	Los Angeles, CA	90037	1	1749.00	Caty Moore	626-655-0910	<a href="mailto:Leasing@GetHomes.org">Leasing@GetHomes.org</a>
8715 Tobias Ave		Panorama City, CA	91402	2	2065.00	Reyna Avila	818-767-7859	<a href="mailto:reyna.avila@eahhousing.org">reyna.avila@eahhousing.org</a>
8715 Tobias Ave		Panorama City, CA	91402	3	2610.00	Reyna Avila	818-767-7859	<a href="mailto:reyna.avila@eahhousing.org">reyna.avila@eahhousing.org</a>
943 E 109th St	5	Los angeles, CA	90059	1	1750.00	Caty Moore	626-655-0910	<a href="mailto:Leasing@GetHomes.org">Leasing@GetHomes.org</a>
943 E 108th St	3	Los angeles, CA	90059	2	1995.00	Caty Moore	626-655-0910	<a href="mailto:Caty@grayroseconsulting.com">Caty@grayroseconsulting.com</a>
128 S Westmoreland Ave		Los Angeles, CA	90004	Studi	1650.00	Botach Managem	323-933-3971	<a href="mailto:abotachmanagement@gmail.com">abotachmanagement@gmail.com</a>
128 S Westmoreland Ave		Los Angeles, CA	90004	2	2452.00	Botach Managem	323-933-3971	<a href="mailto:abotachmanagement@gmail.com">abotachmanagement@gmail.com</a>
1328 21st St	G	Los Angeles, CA	90011	1	1520.00	Caty Moore	626-655-0910	<a href="mailto:Caty@grayroseconsulting.com">Caty@grayroseconsulting.com</a>
2835 3/4 Huron St	4-Mar	Los Angeles, CA	90065	1	1520.00	Caty Moore	626-655-0910	<a href="mailto:Caty@grayroseconsulting.com">Caty@grayroseconsulting.com</a>
3212 W 60th St	3212-0	Los Angeles, CA	90043	3	2895.00	Caty Moore	626-655-0910	<a href="mailto:Caty@grayroseconsulting.com">Caty@grayroseconsulting.com</a>
434 Rampart Blvd		Los Angeles, CA	90057	Studi	1500.00	Botach Managem	323-933-3971	<a href="mailto:abotachmanagement@gmail.com">abotachmanagement@gmail.com</a>
4373 S Van Ness Ave		Los Angeles, CA	90062	2	2400.00	Botach Managem	323-933-3971	<a href="mailto:abotachmanagement@gmail.com">abotachmanagement@gmail.com</a>
504 S Rampart Blvd		Los Angeles, CA	90057	Studi	1500.00	Botach Managem	323-933-3971	<a href="mailto:abotachmanagement@gmail.com">abotachmanagement@gmail.com</a>
639 E Martin Luther Kir 9		Los Angeles, CA	90011	1	1695.00	Caty Moore	626-655-0910	<a href="mailto:Caty@grayroseconsulting.com">Caty@grayroseconsulting.com</a>
11505 Riverside Dr	406	Valley Village, CA	91602	2	2350.00	Jeffrey	818-766-7727	<a href="mailto:leasing@pacprop.net">leasing@pacprop.net</a>
14120 Hamlin Street	15	Valley Glen, CA	91401	1	1795.00	Jeffrey	818-766-7727	<a href="mailto:leasing@pacprop.net">leasing@pacprop.net</a>
7317 Parmalee Ave		Los Angeles, CA	90001	Studi	1000.00	Sola Rental Repre	323-306-4648	<a href="mailto:leasing@solarentals.com">leasing@solarentals.com</a>
1066 1/2 S Cage Ave		Los Angeles, CA	90023	1	1200.00	Property Manage	562-582-7601	<a href="mailto:info@robertspm.com">info@robertspm.com</a>





# Emergency Housing Voucher (EHV)

## Available Units List

Email: [EHV.IP@hacla.org](mailto:EHV.IP@hacla.org)

Address	Unit #	City, State	Zip Code	BR Size	Rental Amount	Contact Person	Phone Number	Email
15007 Burbank Blvd	112	Sherman Oaks, CA	91411	1	1850.00	Jeffrey	818-766-7727	<a href="mailto:leasing@pacprop.net">leasing@pacprop.net</a>
3471 W 5th St	308	Los Angeles, CA	90020	0	1495.00	Sarah Kovalsky	323-986-9308	<a href="mailto:sarah.hoffmanbrothers@gmail.com">sarah.hoffmanbrothers@gmail.com</a>
3620 Stocker St	A	Los Angeles, CA	90008	0	1465.00	Sarah Kovalsky	323-986-9308	<a href="mailto:sarah.hoffmanbrothers@gmail.com">sarah.hoffmanbrothers@gmail.com</a>
511 S Serrano Ave	107	Los Angeles, CA	90020	0	1475.00	Sarah Kovalsky	323-986-9308	<a href="mailto:sarah.hoffmanbrothers@gmail.com">sarah.hoffmanbrothers@gmail.com</a>
832 W Florence	7	Los Angeles, CA	90044	1	1520.00	Caty Moore	626-655-0910	<a href="mailto:Caty@grayroseconsulting.com">Caty@grayroseconsulting.com</a>
832 W Florence	8	Los Angeles, CA	90044	1	1520.00	Caty Moore	626-655-0910	<a href="mailto:Caty@grayroseconsulting.com">Caty@grayroseconsulting.com</a>
1548 E Martin Luther King Jr.		Los Angeles, CA	90011	2	2349.00	Caty Moore	626-655-0910	<a href="mailto:Caty@grayroseconsulting.com">Caty@grayroseconsulting.com</a>
849 W 84th St	2-Jan	Los Angeles, CA	90044	1	1750.00	Caty Moore	626-655-0910	<a href="mailto:Caty@grayroseconsulting.com">Caty@grayroseconsulting.com</a>
6717 San Pedro St	9	Los Angeles, CA	90003	1	1750.00	Caty Moore	626-655-0910	<a href="mailto:Caty@grayroseconsulting.com">Caty@grayroseconsulting.com</a>
6717 San Pedro St	3	Los Angeles, CA	90003	1	1750.00	Caty Moore	626-655-0910	<a href="mailto:Caty@grayroseconsulting.com">Caty@grayroseconsulting.com</a>
8830 1/2 Bandera St	2-Jan	Los Angeles, CA	90002	1	1764.00	Caty Moore	626-655-0910	<a href="mailto:Caty@grayroseconsulting.com">Caty@grayroseconsulting.com</a>
10626 S Budlong Ave	7	Los Angeles, CA	90044	2	1800.00	Caty Moore	626-655-0910	<a href="mailto:Caty@grayroseconsulting.com">Caty@grayroseconsulting.com</a>
521 S Manhattan Pl	303	Los Angeles, CA	90020	1	1625.00	Leasing Agent	310-838-1828	<a href="mailto:info@mdrents.com">info@mdrents.com</a>
11621 Darlington Ave	3	Los Angeles, CA	90049	Stu	1320.00	Leasing Agent	310-838-1828	<a href="mailto:info@mdrents.com">info@mdrents.com</a>
1307 Federal Ave	1	Los Angeles, CA	90025	Stu	1249.00	Leasing Agent	310-838-1828	<a href="mailto:info@mdrents.com">info@mdrents.com</a>
832 W Florence	3	Los Angeles, CA	90044	1	\$1,520	Caty Moore	323-441-6583	<a href="mailto:Caty@grayroseconsulting.com">Caty@grayroseconsulting.com</a>
11840 Kittridge St	34	North Hollywood	91606	1	1650.00	Jeffrey	818-766-7727	<a href="mailto:leasing@pacprop.net">leasing@pacprop.net</a>
11840 Kittridge St	37	North Hollywood	91606	2	1995.00	Jeffrey	818-766-7727	<a href="mailto:leasing@pacprop.net">leasing@pacprop.net</a>
7550 Jordan Ave	111	Canoga Park, CA	91303	1	1750.00	Jeffrey	818-766-7727	<a href="mailto:leasing@pacprop.net">leasing@pacprop.net</a>
4924 Tujunga Ave	9	North Hollywood	91606	2	2450.00	Jeffrey	818-766-7727	<a href="mailto:leasing@pacprop.net">leasing@pacprop.net</a>



# Emergency Housing Voucher (EHV)

## Available Units List

Email: [EHV.IP@hacla.org](mailto:EHV.IP@hacla.org)

Address	Unit #	City, State	Zip Code	BR Size	Rental Amount	Contact Person	Phone Number	Email
5255 Blakeslee Ave	12A	North Hollywood	91606	1	1750.00	Jeffrey	818-766-7727	<a href="mailto:leasing@pacprop.net">leasing@pacprop.net</a>
5500 Bonner Ave	207	North Hollywood	91606	2	2395.00	Jeffrey	818-766-7727	<a href="mailto:leasing@pacprop.net">leasing@pacprop.net</a>
1042 Britannia St		Los Angeles, CA	90033	2	2200.00	Tony	213-293-8281	<a href="mailto:ktloinv@gmail.com">ktloinv@gmail.com</a>
9513 1/2 Clovis Ave		Los Angeles, CA	90002	1	1775.00	Desalyn Stevenso	562-304-5979	<a href="mailto:daesalyns@gmail.com">daesalyns@gmail.com</a>
1542 W 80th St		Los Angeles, CA	90047	1	1650.00	Manola & Raul Ro	562-904-7078/56	<a href="mailto:manola.rodriquez@reagan.com">manola.rodriquez@reagan.com</a>
1425 S Bronson Ave	23	Los Angeles, CA	90019	Studic	1275.00	Ms. Bram	213-468-9129	<a href="mailto:afjinvestments@att.net">afjinvestments@att.net</a>
1425 S Bronson Ave	25	Los Angeles, CA	90019	Studic	1275.00	Ms. Bram	213-468-9129	<a href="mailto:afjinvestments@att.net">afjinvestments@att.net</a>
223 W 90th St		Los Angeles, CA	90003	2	1900.00	Karla Singleton	213-359-9309	<a href="mailto:kzulien@yahoo.com">kzulien@yahoo.com</a>
1747 W Gage St		Los Angeles, CA	90047	2	2000.00	Karla Singleton	213-359-9309	<a href="mailto:kzulien@yahoo.com">kzulien@yahoo.com</a>
11505 Riverside Dr	306	Toulca Lake, CA	91602	2	2295.00	Jeffrey	818-766-7727	<a href="mailto:leasing@pacprop.net">leasing@pacprop.net</a>
731 E Jefferson Blvd	4	Los Angeles, CA	90011	1	1750.00	Caty Moore	626-655-0910	<a href="mailto:Caty@grayroseconsulting.com">Caty@grayroseconsulting.com</a>
325 W 84th St	1	Los Angeles, CA	90001	1	1750.00	Caty Moore	626-655-0910	<a href="mailto:Caty@grayroseconsulting.com">Caty@grayroseconsulting.com</a>
1508 W Florence St	3	Los Angeles, CA	90047	2	2250.00	Caty Moore	626-655-0910	<a href="mailto:Caty@grayroseconsulting.com">Caty@grayroseconsulting.com</a>
1602 W 38th St		Los Angeles, CA	90062	3	2962.00	Caty Moore	626-655-0910	<a href="mailto:Caty@grayroseconsulting.com">Caty@grayroseconsulting.com</a>
10961 S Figueroa St	6	Los Angeles, CA	90061	1	1750.00	Caty Moore	626-655-0910	<a href="mailto:Caty@grayroseconsulting.com">Caty@grayroseconsulting.com</a>
3851 Coco Ave		Los Angeles, CA	90008	Studic	1600.00	Doyin	310-650-6939	<a href="mailto:rent@bueno.group">rent@bueno.group</a>
839 W 43rd St	1	Los Angeles, CA	90037	1	1750.00	Caty Moore	626-655-0910	<a href="mailto:Caty@grayroseconsulting.com">Caty@grayroseconsulting.com</a>
3851 Coco Ave		Los Angeles, CA	90008	Studic	1600.00	Doyin	310-650-6939	<a href="mailto:rent@bueno.group">rent@bueno.group</a>
3851 Coco Ave		Los Angeles, CA	90008	1	1760.00	Doyin	310-650-6939	<a href="mailto:rent@bueno.group">rent@bueno.group</a>
3851 Coco Ave		Los Angeles, CA	90008	2	2350.00	Doyin	310-650-6939	<a href="mailto:rent@bueno.group">rent@bueno.group</a>



# Emergency Housing Voucher (EHV)

## Available Units List

Email: [EHV.IP@hacla.org](mailto:EHV.IP@hacla.org)

Address	Unit #	City, State	Zip Code	BR Size	Rental Amount	Contact Person	Phone Number	Email
6241 Haas Ave		Los Angeles, CA	90047	1	1900.00	Desalyn Stevenso	909-255-9245	<a href="mailto:desalyns@gmail.com">desalyns@gmail.com</a>
8235 1/2 Holmer Ave		Los Angeles, CA	90001	2	2452.00	Frank Martinez/ R	323-270-2628	<a href="mailto:nrosa58@yahoo.com">nrosa58@yahoo.com</a>
9233 Clovis Ave	B	Los Angeles	90002	1	1675.00	Yvonne Cordova	213-595-8294	<a href="mailto:ycordova007@yahoo.com">ycordova007@yahoo.com</a>
527 W 46th St	201	Los Angeles, CA	90037	1	1595.00	Caty Moore	626-655-0910	<a href="mailto:Caty@grayroseconsulting.com">Caty@grayroseconsulting.com</a>
432 W 107th St	0.25	Los Angeles, CA	90003	2	2248.00	Caty Moore	626-655-0910	<a href="mailto:Caty@grayroseconsulting.com">Caty@grayroseconsulting.com</a>
3842 Lockland Dr		Los Angeles, CA	90008	2	2248.00	Caty Moore	626-655-0910	<a href="mailto:Caty@grayroseconsulting.com">Caty@grayroseconsulting.com</a>
2622 S Brighton Ave	2	Los Angeles, CA	90018	1	1795.00	Caty Moore	626-655-0910	<a href="mailto:Caty@grayroseconsulting.com">Caty@grayroseconsulting.com</a>
2069 E Imperial Hwy		Los Angeles, CA	90057	3	3000.00	Sola Rental Repre	323-306-4648	<a href="mailto:info@solarentals.com">info@solarentals.com</a>
321 E Florence Ave		Los Angeles, CA	90003	STUD	1522.00	Sola Rental Repre	323-306-4648	<a href="mailto:info@solarentals.com">info@solarentals.com</a>
3930 Ursula Ave		Los Angeles, CA	90008	1	1695.00	Moises Martinez	323-295-55	<a href="mailto:moisesmartinez@mosscompany.com">moisesmartinez@mosscompany.com</a>
4029 Gelber Pl		Los Angeles, CA	90008	1	1695.00	Moises Martinez	323-295-55	<a href="mailto:moisesmartinez@mosscompany.com">moisesmartinez@mosscompany.com</a>
4029 Gelber Pl		Los Angeles, CA	90008	2	2150.00	Moises Martinez	323-295-55	<a href="mailto:moisesmartinez@mosscompany.com">moisesmartinez@mosscompany.com</a>
8585 Burton Way		Los Angeles, CA	90048	1	2250.00	Mary Reilly	818-736-4537	<a href="mailto:mreilly@mosscompany.com">mreilly@mosscompany.com</a>
4109 S Harvard Blvd	1	Los Angeles, CA	90062	SRO	1200.00	Aldonia Wylie	213-292-1328	<a href="mailto:grnhouze@gmail.com">grnhouze@gmail.com</a>
4109 S Harvard Blvd	2	Los Angeles, CA	90062	SRO	1200.00	Aldonia Wylie	213-292-1328	<a href="mailto:grnhouze@gmail.com">grnhouze@gmail.com</a>
4109 S Harvard Blvd	3	Los Angeles, CA	90062	SRO	1200.00	Aldonia Wylie	213-292-1328	<a href="mailto:grnhouze@gmail.com">grnhouze@gmail.com</a>
4109 S Harvard Blvd	4	Los Angeles, CA	90062	SRO	1200.00	Aldonia Wylie	213-292-1328	<a href="mailto:grnhouze@gmail.com">grnhouze@gmail.com</a>
436 1/2 W 107th St		Los Angeles	90003	1	1764.00	Caty Moore	626-655-0910	<a href="mailto:Caty@grayroseconsulting.com">Caty@grayroseconsulting.com</a>
1607 E Cruces S	2	Wilmington, CA	90744	1	1500.00	Manuel Sanchez	310-808-7961	<a href="mailto:elvaquero19500@hotmail.com">elvaquero19500@hotmail.com</a>
11234 Emelia St	1	North Hollywood	91606	1	1825.00	Aylin Cervantes	818-644-9915	<a href="mailto:aylincervantes@hotmail.com">aylincervantes@hotmail.com</a>



# Emergency Housing Voucher (EHV)

## Available Units List

Email: [EHV.IP@hacla.org](mailto:EHV.IP@hacla.org)

Address	Unit #	City, State	Zip Code	BR Size	Rental Amount	Contact Person	Phone Number	Email
7649 N Hollywood Way 2		Sun Valley, CA	91505	1	1750.00	Aylin Cervantes	818-644-9915	<a href="mailto:aylincervantes@hotmail.com">aylincervantes@hotmail.com</a>
8510 1/2 S San Pedro St		Los Angeles, CA	90003	3	3231.00	Jason Hurst	949-524-0471	<a href="mailto:jason@worldsg.com">jason@worldsg.com</a>
1240 4th Ave	104	Los Angeles, CA	90019	0	1495.00	Caty Moore	626-655-0910	<a href="mailto:Caty@grayroseconsulting.com">Caty@grayroseconsulting.com</a>
1452 N Soto		Los Angeles, CA	90033	3	2850.00	Cassandra Winsto	424-318-2096	<a href="mailto:programs@section8management.com">programs@section8management.com</a>
8318 S San Pedro	A	Los Angeles, CA	90033	3	2700.00	Cassandra Winsto	424-318-2096	<a href="mailto:programs@section8management.com">programs@section8management.com</a>
722 S Ford Blvd	07S	Los Angeles, CA	90022	1	1605.00	Sola Rental Repre	323-306-4648	<a href="mailto:info@solarentals.com">info@solarentals.com</a>
4209 S Western		Los Angeles, CA	90062	1	1765.00	Sola Rental Repre	323-306-4648	<a href="mailto:info@solarentals.com">info@solarentals.com</a>
1617 E 47th St	3	Los Angeles, CA	90011	2	1900.00	Ken Billups	323-813-5845	<a href="mailto:kbillups3@gmail.com">kbillups3@gmail.com</a>
230 W 23rd St	24	Los Angeles, CA	90007	SRO	1229.00	Caty Moore	626-655-0910	<a href="mailto:Caty@grayroseconsulting.com">Caty@grayroseconsulting.com</a>
230 W 23rd St	70	Los Angeles, CA	90007	SRO	1229.00	Caty Moore	626-655-0910	<a href="mailto:Caty@grayroseconsulting.com">Caty@grayroseconsulting.com</a>
1812 W 5th st	309	Los Angeles, CA	90057	Studiv	1945.00	Caty Moore	323-441-6583	<a href="mailto:Caty@grayroseconsulting.com">Caty@grayroseconsulting.com</a>
1812 W 5th st	402	Los Angeles, CA	90057	Studiv	1945.00	Caty Moore	323-441-6583	<a href="mailto:Caty@grayroseconsulting.com">Caty@grayroseconsulting.com</a>
4309 S Main St	209	Los Angeles, CA	90037	1	1849.00	Caty Moore	323-441-6583	<a href="mailto:Caty@grayroseconsulting.com">Caty@grayroseconsulting.com</a>
1241 4th Ave	107	Los Angeles, CA	90019	0	1495.00	Caty Moore	626-655-0910	<a href="mailto:Caty@grayroseconsulting.com">Caty@grayroseconsulting.com</a>
2069 E Imperial Hwy	2063	Los Angeles, CA	90059	4	3400.00	Sola Rental Repre	323-306-4648	<a href="mailto:info@solarentals.com">info@solarentals.com</a>
2069 E Imperial Hwy	#####	Los Angeles, CA	90059	4	3400.00	Sola Rental Repre	323-306-4648	<a href="mailto:info@solarentals.com">info@solarentals.com</a>
2069 E Imperial Hwy	2065	Los Angeles, CA	90059	4	3400.00	Sola Rental Repre	323-306-4648	<a href="mailto:info@solarentals.com">info@solarentals.com</a>
2069 E Imperial Hwy	#####	Los Angeles, CA	90059	4	3400.00	Sola Rental Repre	323-306-4648	<a href="mailto:info@solarentals.com">info@solarentals.com</a>
2069 E Imperial Hwy	2067	Los Angeles, CA	90059	4	3400.00	Sola Rental Repre	323-306-4648	<a href="mailto:info@solarentals.com">info@solarentals.com</a>
2069 E Imperial Hwy	#####	Los Angeles, CA	90059	4	3400.00	Sola Rental Repre	323-306-4648	<a href="mailto:info@solarentals.com">info@solarentals.com</a>



# Emergency Housing Voucher (EHV)

## Available Units List

Email: [EHV.IP@hacla.org](mailto:EHV.IP@hacla.org)

Address	Unit #	City, State	Zip Code	BR Size	Rental Amount	Contact Person	Phone Number	Email
2069 E Imperial Hwy	2071	Los Angeles, CA	90059	4	3400.00	Sola Rental Repre	323-306-4648	<a href="mailto:info@solarentals.com">info@solarentals.com</a>
2069 E Imperial Hwy	#####	Los Angeles, CA	90059	4	3400.00	Sola Rental Repre	323-306-4648	<a href="mailto:info@solarentals.com">info@solarentals.com</a>
2069 E Imperial Hwy	2073	Los Angeles, CA	90059	4	3400.00	Sola Rental Repre	323-306-4648	<a href="mailto:info@solarentals.com">info@solarentals.com</a>
2069 E Imperial Hwy	#####	Los Angeles, CA	90059	4	3400.00	Sola Rental Repre	323-306-4648	<a href="mailto:info@solarentals.com">info@solarentals.com</a>
2069 E Imperial Hwy	2075	Los Angeles, CA	90059	4	3400.00	Sola Rental Repre	323-306-4648	<a href="mailto:info@solarentals.com">info@solarentals.com</a>
2069 E Imperial Hwy	#####	Los Angeles, CA	90059	4	3400.00	Sola Rental Repre	323-306-4648	<a href="mailto:info@solarentals.com">info@solarentals.com</a>
2069 E Imperial Hwy	2073	Los Angeles, CA	90059	4	3400.00	Sola Rental Repre	323-306-4648	<a href="mailto:info@solarentals.com">info@solarentals.com</a>
2069 E Imperial Hwy	#####	Los Angeles, CA	90059	4	3400.00	Sola Rental Repre	323-306-4648	<a href="mailto:info@solarentals.com">info@solarentals.com</a>
321 E Florence Ave	407	Los Angeles, CA	90003	STUD	1522.00	Sola Rental Repre	323-306-4648	<a href="mailto:info@solarentals.com">info@solarentals.com</a>
321 E Florence Ave	408	Los Angeles, CA	90003	STUD	1522.00	Sola Rental Repre	323-306-4648	<a href="mailto:info@solarentals.com">info@solarentals.com</a>
321 E Florence Ave	508	Los Angeles, CA	90003	STUD	1522.00	Sola Rental Repre	323-306-4648	<a href="mailto:info@solarentals.com">info@solarentals.com</a>
4209 S Western	201	Los Angeles, CA	90062	1	1765.00	Sola Rental Repre	323-306-4648	<a href="mailto:info@solarentals.com">info@solarentals.com</a>
4209 S Western	202	Los Angeles, CA	90062	1	1765.00	Sola Rental Repre	323-306-4648	<a href="mailto:info@solarentals.com">info@solarentals.com</a>
4209 S Western	203	Los Angeles, CA	90062	1	1765.00	Sola Rental Repre	323-306-4648	<a href="mailto:info@solarentals.com">info@solarentals.com</a>
4209 S Western	204	Los Angeles, CA	90062	1	1765.00	Sola Rental Repre	323-306-4648	<a href="mailto:info@solarentals.com">info@solarentals.com</a>
4209 S Western	205	Los Angeles, CA	90062	1	1765.00	Sola Rental Repre	323-306-4648	<a href="mailto:info@solarentals.com">info@solarentals.com</a>
4209 S Western	206	Los Angeles, CA	90062	1	1765.00	Sola Rental Repre	323-306-4648	<a href="mailto:info@solarentals.com">info@solarentals.com</a>
4209 S Western	207	Los Angeles, CA	90062	1	1765.00	Sola Rental Repre	323-306-4648	<a href="mailto:info@solarentals.com">info@solarentals.com</a>
4209 S Western	208	Los Angeles, CA	90062	1	1765.00	Sola Rental Repre	323-306-4648	<a href="mailto:info@solarentals.com">info@solarentals.com</a>
4209 S Western	301	Los Angeles, CA	90062	1	1765.00	Sola Rental Repre	323-306-4648	<a href="mailto:info@solarentals.com">info@solarentals.com</a>



# Emergency Housing Voucher (EHV)

## Available Units List

Email: [EHV.IP@hacla.org](mailto:EHV.IP@hacla.org)

Address	Unit #	City, State	Zip Code	BR Size	Rental Amount	Contact Person	Phone Number	Email
4209 S Western	302	Los Angeles, CA	90062	1	1765.00	Sola Rental Repre	323-306-4648	<a href="mailto:info@solarentals.com">info@solarentals.com</a>
4209 S Western	303	Los Angeles, CA	90062	1	1765.00	Sola Rental Repre	323-306-4648	<a href="mailto:info@solarentals.com">info@solarentals.com</a>
4209 S Western	304	Los Angeles, CA	90062	1	1765.00	Sola Rental Repre	323-306-4648	<a href="mailto:info@solarentals.com">info@solarentals.com</a>
4209 S Western	305	Los Angeles, CA	90062	1	1765.00	Sola Rental Repre	323-306-4648	<a href="mailto:info@solarentals.com">info@solarentals.com</a>
4209 S Western	306	Los Angeles, CA	90062	1	1765.00	Sola Rental Repre	323-306-4648	<a href="mailto:info@solarentals.com">info@solarentals.com</a>
4209 S Western	307	Los Angeles, CA	90062	1	1765.00	Sola Rental Repre	323-306-4648	<a href="mailto:info@solarentals.com">info@solarentals.com</a>
4209 S Western	308	Los Angeles, CA	90062	1	1765.00	Sola Rental Repre	323-306-4648	<a href="mailto:info@solarentals.com">info@solarentals.com</a>
4209 S Western	401	Los Angeles, CA	90062	1	1765.00	Sola Rental Repre	323-306-4648	<a href="mailto:info@solarentals.com">info@solarentals.com</a>
4209 S Western	402	Los Angeles, CA	90062	1	1765.00	Sola Rental Repre	323-306-4648	<a href="mailto:info@solarentals.com">info@solarentals.com</a>
4209 S Western	403	Los Angeles, CA	90062	1	1765.00	Sola Rental Repre	323-306-4648	<a href="mailto:info@solarentals.com">info@solarentals.com</a>
4209 S Western	404	Los Angeles, CA	90062	1	1765.00	Sola Rental Repre	323-306-4648	<a href="mailto:info@solarentals.com">info@solarentals.com</a>
4209 S Western	405	Los Angeles, CA	90062	1	1765.00	Sola Rental Repre	323-306-4648	<a href="mailto:info@solarentals.com">info@solarentals.com</a>
4209 S Western	406	Los Angeles, CA	90062	1	1765.00	Sola Rental Repre	323-306-4648	<a href="mailto:info@solarentals.com">info@solarentals.com</a>
4209 S Western	501	Los Angeles, CA	90062	1	1765.00	Sola Rental Repre	323-306-4648	<a href="mailto:info@solarentals.com">info@solarentals.com</a>
4209 S Western	502	Los Angeles, CA	90062	1	1765.00	Sola Rental Repre	323-306-4648	<a href="mailto:info@solarentals.com">info@solarentals.com</a>
4209 S Western	503	Los Angeles, CA	90062	1	1765.00	Sola Rental Repre	323-306-4648	<a href="mailto:info@solarentals.com">info@solarentals.com</a>
4209 S Western	504	Los Angeles, CA	90062	1	1765.00	Sola Rental Repre	323-306-4648	<a href="mailto:info@solarentals.com">info@solarentals.com</a>
4209 S Western	505	Los Angeles, CA	90062	1	1765.00	Sola Rental Repre	323-306-4648	<a href="mailto:info@solarentals.com">info@solarentals.com</a>
4209 S Western	506	Los Angeles, CA	90062	1	1765.00	Sola Rental Repre	323-306-4648	<a href="mailto:info@solarentals.com">info@solarentals.com</a>
1103 W 64th St	204	Los Angeles, CA	90044	Studic	1369.00	Sola Rental Repre	323-306-4648	<a href="mailto:info@solarentals.com">info@solarentals.com</a>



# Emergency Housing Voucher (EHV)

## Available Units List

Email: [EHV.IP@hacla.org](mailto:EHV.IP@hacla.org)

Address	Unit #	City, State	Zip Code	BR Size	Rental Amount	Contact Person	Phone Number	Email
504 S Rampart Blvd	8	Los Angeles, CA	90057	Studios	1642.00	Botach Management	323-933-3971	<a href="mailto:abotachmanagement@gmail.com">abotachmanagement@gmail.com</a>
504 S Rampart Blvd	20	Los Angeles, CA	90057	Studios	1642.00	Botach Management	323-933-3971	<a href="mailto:abotachmanagement@gmail.com">abotachmanagement@gmail.com</a>
504 S Rampart Blvd	21	Los Angeles, CA	90057	Studios	1642.00	Botach Management	323-933-3971	<a href="mailto:abotachmanagement@gmail.com">abotachmanagement@gmail.com</a>
504 S Rampart Blvd	26	Los Angeles, CA	90057	Studios	1642.00	Botach Management	323-933-3971	<a href="mailto:abotachmanagement@gmail.com">abotachmanagement@gmail.com</a>
504 S Rampart Blvd	103	Los Angeles, CA	90057	Studios	1642.00	Botach Management	323-933-3971	<a href="mailto:abotachmanagement@gmail.com">abotachmanagement@gmail.com</a>
504 S Rampart Blvd	207	Los Angeles, CA	90057	Studios	1642.00	Botach Management	323-933-3971	<a href="mailto:abotachmanagement@gmail.com">abotachmanagement@gmail.com</a>
2314 W Jefferson Blvd	C	Los Angeles, CA	90018	1	1926.00	Botach Management	323-933-3971	<a href="mailto:abotachmanagement@gmail.com">abotachmanagement@gmail.com</a>
1675 W Martin Luther I	9	Los Angeles, CA	90062	SRO	1231.00	Botach Management	323-933-3971	<a href="mailto:abotachmanagement@gmail.com">abotachmanagement@gmail.com</a>
1675 W Martin Luther I	11	Los Angeles, CA	90062	SRO	1231.00	Botach Management	323-933-3971	<a href="mailto:abotachmanagement@gmail.com">abotachmanagement@gmail.com</a>
908 S Normandie Ave	4	Los Angeles, CA	90006	Studios	1642.00	Botach Management	323-933-3971	<a href="mailto:abotachmanagement@gmail.com">abotachmanagement@gmail.com</a>
908 S Normandie Ave	12	Los Angeles, CA	90006	Studios	1642.00	Botach Management	323-933-3971	<a href="mailto:abotachmanagement@gmail.com">abotachmanagement@gmail.com</a>
4373 S Van Ness Ave	6	Los Angeles, CA	90062	2	2469.00	Botach Management	323-933-3971	<a href="mailto:abotachmanagement@gmail.com">abotachmanagement@gmail.com</a>
315 S Harvard Blvd		Los Angeles, CA	90020	1	1800.00	Elijah Shin	213-550-9009	<a href="mailto:dreamrealtyla@gmail.com">dreamrealtyla@gmail.com</a>
715 S Berendo St		Los Angeles, CA	90005	1	1725.00	Jose	213-381-2200	<a href="mailto:berendomanagement@gmail.com">berendomanagement@gmail.com</a>
339 S Ardmore St		Los Angeles, CA	90020	1	1850.00	Sarah	213-389-4899	<a href="mailto:339ardmore@abracmangt.com">339ardmore@abracmangt.com</a>
984 S Oxford Ave		Los Angeles, CA	90006	0	1275.00	Thomas	323-516-2859	<a href="mailto:abotachmanagement@gmail.com">abotachmanagement@gmail.com</a>
603 S Rampart Blvd		Los Angeles, CA	90057	1	1895.00	Frank	323-989-4673	<a href="mailto:abotachmanagement@gmail.com">abotachmanagement@gmail.com</a>
1733 North Cherokee Ave		Los Angeles, CA	90028	Studios	1325.00	Jessica Hayes	818-351-3256	<a href="mailto:jessicahayes@mosscompany.com">jessicahayes@mosscompany.com</a>
5320 Newcastle Ave		Encino, CA	91316	2	2395.00	Maria	818-343-8915	<a href="mailto:crownencino@mosscompany.com">crownencino@mosscompany.com</a>
3749 McLaughlin Ave		Los Angeles, CA	90066	2	2250.00	Leasing Agent	310-359-6684	<a href="mailto:3749mclaughlin@mosscompany.com">3749mclaughlin@mosscompany.com</a>



# Emergency Housing Voucher (EHV)

## Available Units List

Email: [EHV.IP@hacla.org](mailto:EHV.IP@hacla.org)

Address	Unit #	City, State	Zip Code	BR Size	Rental Amount	Contact Person	Phone Number	Email
542 W 76th St	5	Los Angeles, CA	90042	2	1995.00	Caty Moore	626-655-0910	<a href="mailto:Caty@grayroseconsulting.com">Caty@grayroseconsulting.com</a>
625 S Burlington Ave	302	Los Angeles, CA	90057	1	1668.00	Caty Moore	626-655-0910	<a href="mailto:Caty@grayroseconsulting.com">Caty@grayroseconsulting.com</a>
927 S 108th St	5	Los Angeles, CA	90059	2	1945.00	Caty Moore	626-655-0910	<a href="mailto:Caty@grayroseconsulting.com">Caty@grayroseconsulting.com</a>
3862 S Potomac Ave	3	Los Angeles, CA	90008	1	1795.00	Caty Moore	626-655-0910	<a href="mailto:Caty@grayroseconsulting.com">Caty@grayroseconsulting.com</a>
3853 S Gibralta Ave	3	Los Angeles, CA	90059	1	1849.00	Caty Moore	626-655-0910	<a href="mailto:Caty@grayroseconsulting.com">Caty@grayroseconsulting.com</a>
503 S Union St	310	Los Angeles, CA	90017	Studio	1495.00	Caty Moore	626-655-0910	<a href="mailto:Caty@grayroseconsulting.com">Caty@grayroseconsulting.com</a>
11041 Moorpark St	1	Studio City, CA	91602	2	2195.00	Jeffrey	818-766-7727	<a href="mailto:leasing@packprop.net">leasing@packprop.net</a>
15156 Dickens St	5	Sherman Oaks, CA	91403	2	2395.00	Jeffrey	818-766-7727	<a href="mailto:leasing@packprop.net">leasing@packprop.net</a>
10745 Hortense St	14	Toluca Lake, CA	911602	1	1850.00	Jeffrey	818-766-7727	<a href="mailto:leasing@packprop.net">leasing@packprop.net</a>
4510 Pinafore St	2	Los Angeles, CA	90008	1	1600.00	Westland Apartm	562-257-6563	<a href="mailto:pinaforeapts@westlandreg.com">pinaforeapts@westlandreg.com</a>



# SoLa Rentals Vacancies



## Sola Rentals Coming Soon Units January 11, 2022

(12) 4 Bedrooms (1) 3 Bedroom City Housing Voucher	2069 E Imperial Hwy Los Angeles, CA 90059 Ready: 2/18/22
(28) 1 Bedrooms (3) Studios City Housing Voucher	321 E Florence Ave Los Angeles, CA 90003 Ready: 3/17/22
(25) 1 Bedrooms City Housing Voucher	4209 S Western ave Los Angeles, CA 90062 Ready: 3/18/22
(1) Studio LB Housing Voucher	6410 N Paramount Blvd #9 Long Beach, CA 90805 Ready: 1/11/22
(2) Studio City Housing Voucher	1103 W 64th St #102 #204 Los Angeles, CA 90047 Ready: 1/13/22



### FOR MORE INFORMATION, PLEASE CONTACT

The Leasing Team  
A: 8629 S Vermont Ave  
Los Angeles, CA 90044  
O: 323-306-4648 ext. 420  
E: [leasing@SoLARentals.com](mailto:leasing@SoLARentals.com)

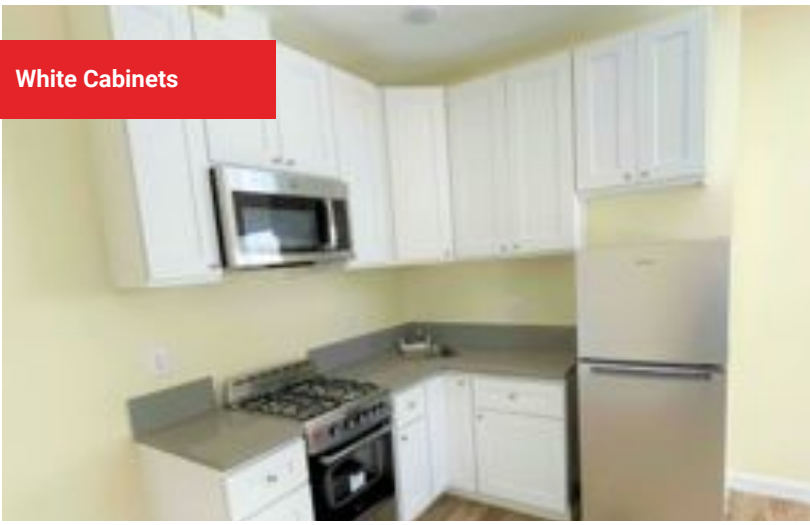
**APPLY ONLINE NOW at**  
**[www.SoLaRentals.com](http://www.SoLaRentals.com)**

**[More Details & Rental Criteria Below](#)**



Inventory varieties every day to see [solarentals.com/vacancies](http://solarentals.com/vacancies) for most up to date listing.

**White Cabinets**



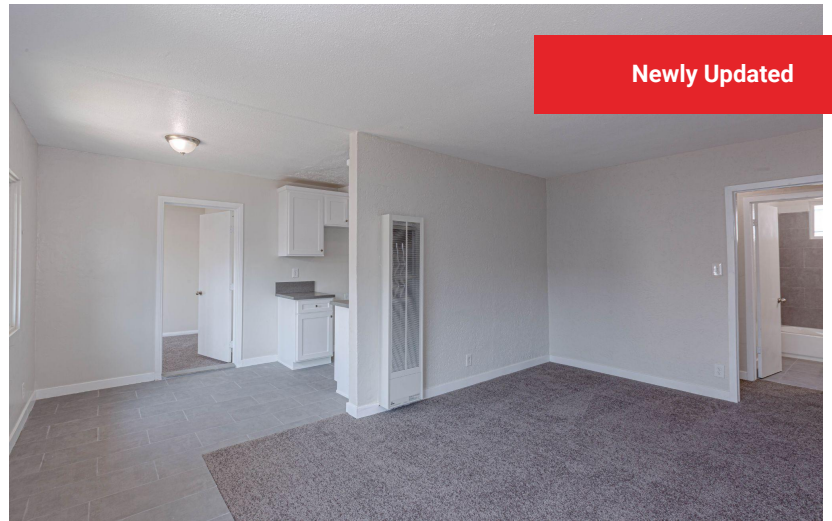
**New Appliances**



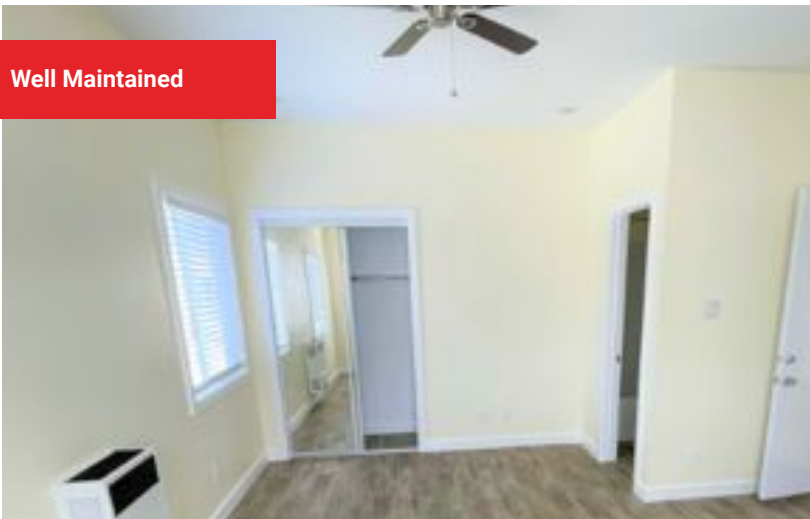
**Updated Finishes**



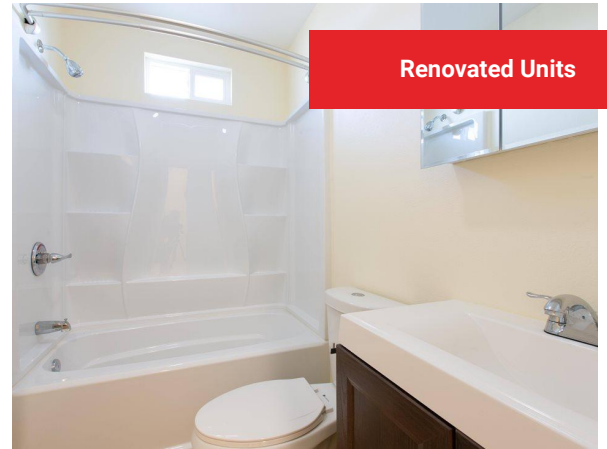
**Newly Updated**



**Well Maintained**



**Renovated Units**



- Application (Packet)
- Copy of ID
- Copy of Social Security
- 2 Months Proof of Income (2 most current months)
- 2 Months Bank Statements (2 most current months)
- Application Fee (\$30) (Money Order or Online)

- Application Packet Dropbox located in front of our office
- Application Email [Leasing@solarentals.com](mailto:Leasing@solarentals.com)
- Applications located at our office 24/7
- Online Application at [Solarentals.com](http://Solarentals.com) (Select Properties → Select Apply Now)

**Price Range**

- Singles \$1,000 - \$1,245
- Studios \$1,369 - \$1,660
- 1 Bedrooms \$1,605 - \$1,924
- 2 Bedrooms \$2,050 - \$2,452
- 3 Bedrooms \$2,700 - \$3,231
- 4 Bedrooms \$3,000 - \$3,519





# CECIL HOTEL APARTMENTS

640 S. Main Street  
Los Angeles, CA 90014

PROFESSIONALLY MANAGED BY



**SKID ROW HOUSING TRUST**

Homes. Support. Success.



## THE HEART OF THE CITY

Centrally located in the Downtown Los Angeles Historic Core, the recently renovated Cecil Hotel Apartments offers affordable living in a historic residence with impressive skyline views of the city.

Contact us today to set up a tour!

## COMMUNITY FEATURES

- A mix of SRO's and efficiency studios
- Shared kitchen with all-new appliances
- Several shared restrooms and showers on each floor
- Laundry facility
- Recreational room with resident activities

**For More Information**  
char.johnson@skidrow.org  
(213)542-7575



640 S. Main Street  
Los Angeles, CA 90014

# 729 1/2 West 74th Street

**0**  
BEDS

**1.0**  
BATHS

**\$1,350**  
RENT

**(310) 570-0093**  
www.PowerPropertyManagement.com



---

PROPERTY ADDRESS

729 1/2 West 74th Street  
Los Angeles, CA 90044

SQUARE FEET: 315    AVAILABLE: 12/14/21

---

DESCRIPTION

This studio + 1 bath unit features carpeting throughout; kitchen includes stove. Street parking only. The unit is in a convenient location and within walking distance to local fast food eateries such as McDonalds, Jack in the Box, Burger King, Pizza Hut and within a short drive or walk to El Super market, USPS office, gas stations, Ascot Branch library, K-12 schools, places of worship, the Mt. Carmel Recreation Center and other fitness centers; near the 110 FWY.

---

PET POLICY

- Cats not allowed
- Dogs not allowed

---

RENTAL TERMS

Rent	\$1,350
Security Deposit	\$1,350
Application Fee	\$45

